

Wärtsilä Corporation Annual Report 2017

GOVERNANCE

**Enabling
sustainable
societies
with smart
technology**

Governance

Corporate governance	03	Values and the control environment	22
Annual General Meeting	04	Business processes	22
Board of Directors	05	Guidelines and communication	22
Operations of the Board of Directors	08	Monitoring	23
Responsibilities of the Board of Directors	09	Audit	23
The Board's committees	10	Related party transactions	24
Board of Management	12	Insider management	24
The President & CEO and the Deputy CEO	15	Remuneration report 2017	25
Operations of the Board of Management	15	Risks and risk management	32
Corporate management	15	Risk profiles and responsibilities	43
Internal control	19		

Corporate governance

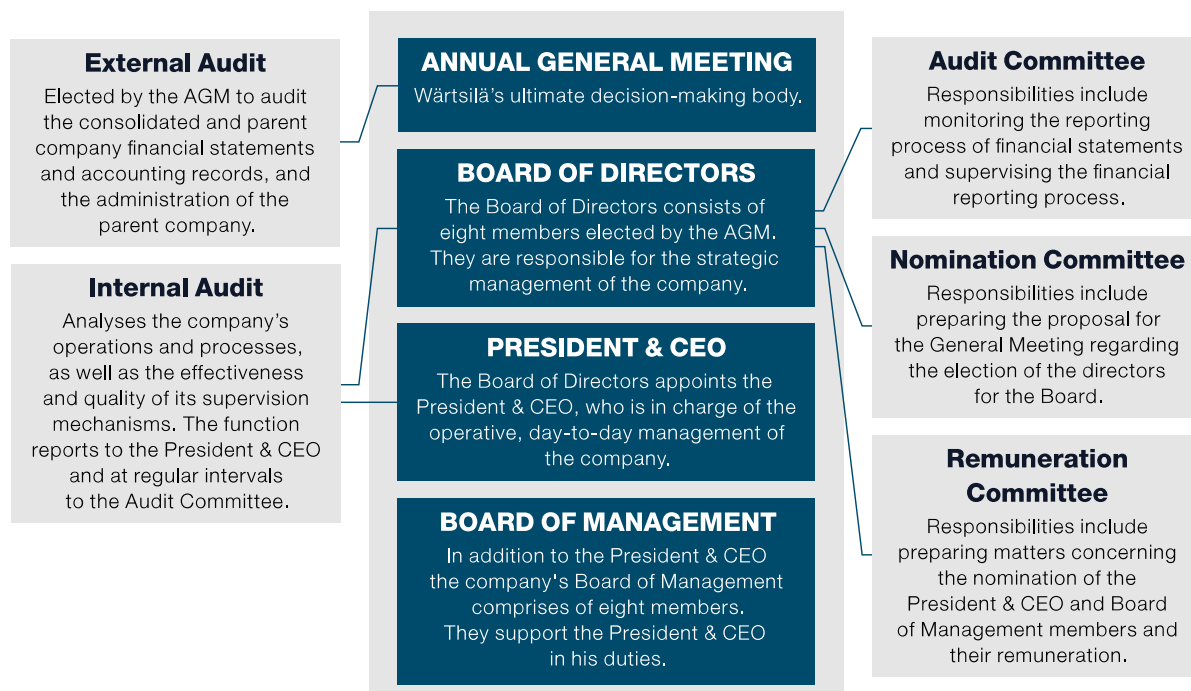
Wärtsilä Corporation complies with the guidelines and provisions of its Articles of Association, the Finnish Limited Liability Companies Act, and the rules and regulations of Nasdaq Helsinki Ltd. Wärtsilä also applies the Global Reporting Initiative’s G4 Sustainability Reporting Guidelines and complies with the Finnish Corporate Governance Code 2015 (“Code”) issued by the Finnish Securities Market Association. The Code is publicly available on <http://cgfinland.fi/en>. Wärtsilä has not deviated from any of the Code’s recommendations.

Wärtsilä’s Corporate Governance Statement, prepared in accordance with the recommendations of the Code, is published as a separate statement on Wärtsilä’s website as well as in this Annual Report. The content of this Corporate Governance section corresponds fully to Wärtsilä’s Corporate Governance Statement. Wärtsilä’s Audit Committee has reviewed the Corporate Governance Statement, and the Company’s external auditor has monitored the issuing of the statement and verified that the description of the main features of the internal control and risk management section, as related to the financial reporting process included in the statement, matches the Financial Statements.

Governing bodies

Wärtsilä implements a single-tier governance model, by which management of the Wärtsilä Group is the responsibility of the General Meeting of shareholders, the Board of Directors, and the President & CEO. Their duties are for the most part defined by the Finnish Companies Act. The General Meeting of shareholders elects the Board of Directors and auditor. The Board of Directors is responsible for the strategic management of the company, and is assisted in its work by the Board Committees. The Board appoints the President & CEO. He is in charge of the operative, day-to-day management of the company, with support from the Board of Management.

Wärtsilä’s governance model



Annual General Meeting

Wärtsilä's ultimate decision-making body is the General Meeting of shareholders. It resolves issues as defined for General Meetings in the Finnish Companies Act and the company's Articles of Association. Agenda items for the General Meeting of shareholders include the following:

- **approving the financial statements**
- **deciding on the distribution of dividends**
- **discharging the company's Board of Directors and President & CEO from liability for the financial year**
- **electing the company's Board of Directors and auditor and deciding on their remuneration**

A General Meeting of Wärtsilä Corporation shareholders is held at least once a year, at a time no later than the end of June. If needed, the company may also hold Extraordinary General Meetings. An invitation to the General Meeting is published on the Company's website or in not less than two daily newspapers, which are commonly distributed in Finland, as decided by the Board of Directors. The invitation shall be published no earlier than two months, and no later than three weeks, prior to the General Meeting. It shall, however, be published at least nine days prior to the shareholders' record date. Wärtsilä also publishes invitations to its General Meetings as stock exchange releases. The documents and draft resolutions to be submitted to the General Meeting can be found on Wärtsilä's website.

Shareholders have the right to add items falling within the competence of the Annual General Meeting to the meeting's agenda. The request must be submitted to the Board of Directors in writing sufficiently in advance of the meeting so that the item can be added to the Notice of the General Meeting. Wärtsilä publishes on its website the date by which a shareholder must notify the company's Board of Directors of an issue that he or she demands to be addressed at the General Meeting. This information is given no later than by the end of the financial period preceding the General Meeting, and includes the postal or email address to which the demand shall be sent. The demand is always deemed to have arrived in sufficient time if the Board has been notified of the demand at the latest four weeks before the delivery of the Notice of the General Meeting.

All shareholders registered by the record date in the company's list of shareholders maintained by Euroclear Finland Ltd have the right to attend the Annual General Meeting. Each share entitles the holders to one vote. The General Meeting is organised in such a manner that shareholders can participate in the meeting as extensively as possible. The Chairman of the Board of Directors, the members of the Board of Directors, and the President & CEO are present at the General Meeting. The auditor-in-charge also attends the Annual General Meeting. The director candidates shall also be present at the General Meeting that decides upon their election.

Annual General Meeting 2017

Wärtsilä's Annual General Meeting was held on 2 March 2017. A total of 1,646 shareholders representing 113,297,157 votes participated in person or by proxy.

The Annual General Meeting approved the financial statements and discharged the members of the Board of Directors and the company's President & CEO from liability for the financial year 2016. The Meeting approved the Board of Directors' proposal to pay a dividend of EUR 1.30 per share in two instalments. The first instalment of EUR 0.65 per share was paid on 13 March 2017, and the second instalment of EUR 0.65 per share was paid on 21 September 2017. The audit firm PricewaterhouseCoopers Oy was elected as the auditor of the Company for the year 2017, following a tendering process initiated by Wärtsilä's Audit Committee. The Annual General Meeting authorised the Board of Directors to repurchase and/or distribute a maximum of 19,000,000 shares.

All resolutions were taken without voting. The minutes of the meeting and other related documents can be found on Wärtsilä's website; www.wartsila.com > Investors > Governance.

Board of Directors

Mikael Lilius

Independent of the company and significant shareholders. Chairman of the Board of Wartsilä Corporation. Born 1949, B.Sc. (Econ.). Member of the Board of Wartsilä Corporation since 2010, Chairman of the Board since 2011.

Primary working experience

Fortum Oyj, President & CEO, 2000-2009; Gambro AB, President & CEO, 1998-2000; Incentive AB, President & CEO, 1991-1998; KF Industri AB (Nordico), President & CEO, 1989-1991 and Huhtamäki Oy, President of the Packing Division, 1986-1989.

Other positions of trust

Ahlström Capital Oy and Metso Corporation, Chairman of the Board; Evli Bank Ltd., Member of the Board; Ab Kelonia Oy, Member of the Supervisory Board.

Holdings in Wartsilä Corporation on 31.12.2017: 19,359 shares



Tom Johnstone CBE

Independent of the company, dependent of significant shareholders. Born 1955, Master of Arts, Honorary Doctorate in Business Administration and Honorary Doctorate in Science. Member of the Board of Wartsilä Corporation since 2015, Deputy Chairman of the Board since 2017.

Primary working experience

Several management posts within the SKF Group, the latest as President and CEO of AB SKF, 2003-2014.

Other positions of trust

British Swedish Chamber of Commerce, Combient AB and Husqvarna AB, Chairman of the Board; Investor AB and Volvo Cars, Member of the Board.

Holdings in Wartsilä Corporation on 31.12.2017: 2,069 shares



Maarit Aarni-Sirviö

Independent of the company and significant shareholders. Born 1953, M.Sc. (Tech.), eMBA. Secretary General of Directors' Institute Finland – Hallitusammattilaiset ry; Managing Director of Boardview Oy; Senior Adviser at Eera Oy. Member of the Board of Wartsilä Corporation since 2007.

Primary working experience

Mint of Finland Ltd., President and CEO, 2008-2010; Borealis Group, 1994-2008, several senior positions of which the most recent was Vice President BU Phenol, 2001-2008, Vice President BU Olefins, 1997-2001 in Copenhagen, Denmark and Neste Oyj 1977-1994.

Other positions of trust

Directors' Institute Finland – Hallitusammattilaiset ry and ecoDa (The European Confederation of Directors' Associations), Member of the Board. Finland National Committee for UN Women, Chairman of the Board.

Relevant prior positions of trust

Board memberships: Berendsen plc, 2014-2017; Rautaruukki Oyj, 2005-2012; Ponsse Oyj, 2007-2010 and Vattenfall AB, Sweden, 2004-2007.

Holdings in Wartsilä Corporation on 31.12.2017: 10,282 shares



Kaj-Gustaf Bergh

Independent of the company and significant shareholders. Born 1955, B.Sc., LL.M. Managing Director of Föreningen Konstsamfundet r.f. Member of the Board of Wärtsilä Corporation since 2008.

Primary working experience

Skandinaviska Enskilda Banken, Member of management, 2000-2001; SEB Asset Management, Director, 1998-2001; Ane Gyllenberg Ab, Chief Executive Officer, 1986-1998; Oy Bensow Ab, Director, Executive Vice President, 1985-1986; Ane Gyllenberg Ab, Administrative manager, 1984-1985 and Ky von Konow & Co, Administrative manager, 1982-1983.

Other positions of trust

Julius Tallberg Oy Ab, Mercator Invest Ab and KSF Media Holding Ab, Chairman of the Board; Stockmann plc, Ramirent Group and JM AB, Member of the Board.

Relevant prior positions of trust

Board chairmanships: Sponda Oyj 2013-2017; Stockmann plc 2014-2016; Fiskars Corporation 2006-2014; Ålandsbanken Abp 2011-2013 and Aktia Abp 2005-2009. Board memberships: Fiskars Corporation 2014-2015 and Stockmann plc 2007-2013.

Holdings in Wärtsilä Corporation on 31.12.2017: 9,504 shares



Karin Falk

Independent of the company and significant shareholders. Born 1965, B.Sc. (Econ.). Senior Vice President Volvo Trucks Services & Customer Quality. Member of the Board of Wärtsilä Corporation since 2017.

Primary working experience

Volvo Group, Executive Vice President, Corporate Strategy & Brand Portfolio 2012-2016; Volvo Group, President, Non-Automotive Purchasing 2008-2012. Volvo Car Corporation, Vice President, Volvo Car Customer Service 2006-2008; Volvo Car Corporation, President, Volvo Car Special Vehicles 2001-2006; Various positions within Volvo Cars and Volvo Group 1988-2001.

Other positions of trust

Volvo Group Venture Capital, Member of the Board.

Holdings in Wärtsilä Corporation on 31.12.2017: 472 shares



Johan Forssell

Independent of the company, dependent of significant shareholders. Born 1971, M.Sc. (Economics and Business Administration). President and CEO of Investor AB. Member of the Board of Wärtsilä Corporation since 2017.

Primary working experience

Investor AB, Head of Core Investments and Member of the Management Group, 2006-2015; Investor AB, Project Director, 2014; Aleris AB, Head of Research, 2003-2006; Investor AB, Head of Capital Goods and Healthcare sector, 2001-2003; Investor AB, Head of Capital Goods sector and Analyst, 1995-1999.

Other positions of trust

Atlas Copco, EQT AB, Epiroc AB and Patricia Industries, Member of the Board.

Holdings in Wärtsilä Corporation on 31.12.2017: 472 shares



Risto Murto

Independent of the company and significant shareholders. Born 1963, Ph.D. (Econ.). President & CEO of Varma Mutual Pension Insurance Company. Member of the Board of Wäertsilä Corporation since 2014.

Primary working experience

Investments, Varma, Executive Vice President, 2010-2013; Investments, Varma, Chief Investment Officer, 2006-2010; Opstock Ltd, Managing Director, 2000-2005; Opstock Ltd, Director, 1997-2000.

Other positions of trust

University of Oulu and The Finnish Pension Alliance TELA, Chairman of the Board; Sampo plc, Member of the Board.

Holdings in Wäertsilä Corporation on 31.12.2017: 2,452 shares

**Markus Rauramo**

Independent of the company and significant shareholders. Born 1968, M.Sc. (Econ. and Pol. Hist.). Chief Financial Officer and Member of the Fortum Executive Management Team. Member of the Board of Wäertsilä Corporation since 2011.

Primary working experience

Fortum Corporation, Executive Vice President, City Solutions Division 2016-2017; Fortum Corporation, Executive Vice President, Heat, Electricity Sales and Solutions Division, 2014-2016; Fortum Corporation, Chief Financial Officer, 2012-2014; Stora Enso Oyj Helsinki, CFO and Member of the GET, 2008-2012; Stora Enso International London, SVP Group Treasurer, 2004-2008; Stora Enso Oyj Helsinki, VP Strategy and Investments, 2001-2004; Stora Enso Financial Services Brussels, VP Head of Funding, 1999-2001 and Enso Oyj Helsinki, several financial tasks, 1993-1999.

Other positions of trust

Teollisuuden Voima Oyj, Member of the Board.

Holdings in Wäertsilä Corporation on 31.12.2017: 5,006 shares



Operations of the Board of Directors

Responsibility for the management of the company and the proper organisation of its operations is invested in the company's Board of Directors, which is composed of five to ten members. Board members serve for one year at a time and are elected by the General Meeting.

According to the Corporate Governance Code's recommendation 10, the majority of Board members shall be independent of the company and at least two of the members representing this majority shall be independent of significant shareholders of the company. The Board evaluates the independence of the members annually and re-evaluates as necessary.

The Nomination Committee prepares the proposal for the General Meeting regarding the election of the directors for the Board, and communicates with significant shareholders, when required, on matters pertaining to the proposal. The proposal for the composition of the Board is included in the Notice of the General Meeting. The same applies to a proposal for the composition of the Board made by shareholders with at least 10% of the votes carried by the company shares, provided that the candidates have given their consent to the election and the company has received information on the proposal sufficiently in advance as to be included in the Notice of the General Meeting. The candidates proposed shall be disclosed separately in corresponding order. Wärtsilä publishes the biographical details of the candidates for the Board on its website in connection with publication of the Notice of the General Meeting.

The Board elects a chairman and a deputy chairman from among its members. The Board steers and supervises the company's operations, and decides on policies, goals, and strategies of major importance. The principles applied by the Board to its regular work are set out in the Board Charter. The Board also approves the rules of procedure applied by the Board's committees setting out their main tasks and working principles. In addition to matters requiring its decision, the Board is also given updates at its meetings on the Group's operations, financial position and risks.

The Board conducts an annual self-evaluation of its operations and working methods. The purpose of this evaluation is to assess how the Board has executed its tasks during the year and to act as a basis for developing Board functions.

The Board of Directors convenes 8-11 times a year following a pre-determined schedule. In addition to these meetings, the Board convenes as necessary. All board meetings are documented.

Diversity principles

In order for the Board of Directors to discharge its duties in the most effective manner, the Board must be highly qualified and sufficiently diverse. When preparing its proposal for the Board's composition, the Nomination Committee takes into account the educational and professional background of the individual candidates, as well as international experience so that the composition of the Board represents a wide variety of competencies and qualifications. The Nomination Committee also takes into account the candidates' age, as having different seniority levels on the Board is considered beneficial in terms of ensuring mutually complementing experience.

Wärtsilä's principle with regard to gender is to have members of both genders represented on the Board. In December 2017, Wärtsilä had two female board members out of eight members in total. The objective of the Company is to achieve over time a more balanced representation of both genders on the Wärtsilä Board. The Nomination Committee assesses the potential candidates not only in terms of their individual qualifications and characteristics, but also in terms of their ability to effectively work together and jointly support and challenge the company management in a proactive and constructive way.

Board of Directors in 2017

As of 2 March 2017, the Board consisted of the following eight members: Ms Maarit Aarni-Sirviö, Mr Kaj-Gustaf Bergh, Ms Karin Falk, Mr Johan Forssell, Mr Tom Johnstone (deputy chairman), Mr Mikael Lilius (chairman), Mr Risto Murto, and Mr Markus Rauramo.

All eight Board members were determined to be independent of the company and six members were determined to be independent of significant shareholders. Mr Tom Johnstone was determined to be dependent of significant shareholders, due to

his position on the board of Investor AB. Mr Johan Forssell was determined to be dependent of significant shareholders, due to his position as the President and CEO of Investor AB.

Until 2 March 2017, the Board consisted of the following eight members: Ms Maarit Aarni-Sirviö, Mr Kaj-Gustaf Bergh, Mr Sune Carlsson (deputy chairman), Mr Tom Johnstone, Mr Mikael Lilius (chairman), Mr Risto Murto, Ms Gunilla Nordström and Mr Markus Rauramo.

During 2017, Wärtsilä's Board of Directors held nine meetings. The average attendance of all directors was 100%. The financial and strategic development of Wärtsilä and its position in the markets, its growth opportunities, and the general further development of the Company have been, among others, the major items on the Board's agenda. People matters are also an important and continuous part of the Board's work, as they contribute to Wärtsilä's long-term success. During 2017, areas of particular focus included the digital strategy of the Group, business development in Asia as well as the acquisition of Greensmith Energy Management Systems Inc.

Board member meeting participation in 2017

	Number of meetings	% of meetings
Mikael Lilius, Chairman	9/9	100
Tom Johnstone, Deputy Chairman	9/9	100
Maarit Aarni-Sirviö	9/9	100
Kaj-Gustaf Bergh	9/9	100
Karin Falk	8/8	100
Johan Forssell	8/8	100
Risto Murto	9/9	100
Markus Rauramo	9/9	100
Until 2 March 2017		
Sune Carlsson	2/2	100
Gunilla Nordström	2/2	100

Responsibilities of the Board of Directors

The Board considers all matters stipulated to be the responsibility of a board of directors by legislation, other regulations, and the company's Articles of Association. The most important of these are:

- **the annual and interim financial statements**
- **matters to be put before the General Meetings of shareholders**
- **the appointment of the President & CEO, the Executive Vice Presidents and the CEO's deputy, if any**
- **the organisation of financial supervision within the company**

The Board is also responsible for considering any matters that are so far-reaching with respect to the area of the Group's operations, that they cannot be considered to fall within the scope of the Group's day-to-day administration. Examples of such matters include:

- **approval of the long-term goals of the Group and its businesses, as well as the strategies to achieve them**
- **monitoring the developments, opportunities and threats in the external environment, and their impact on goals and strategy**
- **approval of the annual business plan and target setting for the Group**
- **approval of risk management principles**

- **monitoring and assessing the performance of the President & CEO**
- **approval of the remuneration and pension benefits of the President & CEO, the Executive Vice Presidents and the CEO's deputy**
- **approval of the corporate governance principles**
- **overseeing that the Company complies with legal and regulatory requirements and its Code of Conduct and other established values and ethical principles in its operations**
- **discussing and monitoring the R&D and product development plans of the Company**
- **the appointing of the Board committees**
- **the granting of charitable donations**
- **approval of other matters that are strategically or financially important, such as significant investments, acquisitions or divestments.**

The Board's committees

The Board of Directors appoints annually an Audit Committee, a Nomination Committee, and a Remuneration Committee, and may also nominate other committees if considered necessary in its constitutive meeting following the Annual General Meeting. The Board appoints the members of these committees, and their chairmen, taking into consideration the expertise and experience required for the duties of the committee. The Board also has the right to remove a member from a committee. The members of each committee are appointed for the same term of office as the Board itself. In addition to the committee members, other Board members may participate in committee meetings, if they so wish. The purpose of the Board's committees is to prepare matters to be put before the Board for its decision. The committees have no decision-making authority of their own.

The Audit Committee

The Board of Directors appoints an Audit Committee to assist it in the performance of its supervisory duties. The Board appoints from among its members at least three members to the Committee. These members shall have the qualifications necessary to perform the responsibilities of the Audit Committee. The majority of the members of the Audit Committee shall be independent of the company and at least one member shall be independent of the company's significant shareholders.

The Board defines the duties of the Audit Committee in the charter confirmed for the Committee. The Audit Committee monitors the reporting process of financial statements, supervises the financial reporting process, and monitors the efficiency of the internal control, internal audit and risk management systems. Furthermore, the Committee reviews the description of the main features of the internal control and risk management systems pertaining to the financial reporting process, monitors the statutory audit of the financial statements and consolidated financial statements, evaluates the independence of the statutory audit firm, and prepares the proposal for resolution on the election of the auditor. Other duties of the Audit Committee include reviewing the accounting principles of the company and approving any amendments to them, reviewing the interim and financial statements of the company and the reports prepared by the auditor for the Audit Committee, as well as evaluating the processes aimed at ensuring compliance with laws and regulations and monitoring the company's credit position and taxation. The Audit Committee also reviews the company's Corporate Governance Statements and reviews and resolves any special issues raised by the Board of Directors that fall within the competence of the Audit Committee.

The Chairman of the Audit Committee convenes the Committee as required. The Chairman also reports the Committee's proposals to the Board of Directors and regularly reports to the Board on the Committee's meetings.

Audit Committee in 2017

Chairman Markus Rauramo, members Maarit Aarni-Sirviö and Risto Murto. All members are independent of the company and significant shareholders. The Audit Committee met five times in 2017. The average attendance of all Committee members was 100%.

The Nomination Committee

The Board of Directors appoints a Nomination Committee to assist it in its work. The Board appoints at least three of its members to serve on the Committee. The majority of the members of the Committee shall be independent of the company.

The Board defines the duties of the Nomination Committee in the charter confirmed for the Committee. The Nomination Committee prepares the proposal to be put before the General Meeting regarding the election of the directors for the Board. The Committee communicates, when required, with major shareholders in matters pertaining to the election of the directors for the Board. The Nomination Committee prepares matters concerning the remuneration applying to Board members. The Nomination Committee monitors and reports to the Board of Directors the achievement related to the Board's diversity objectives on a yearly basis, and, if needed, the Committee proposes adjustments to the Diversity Policy for the Board of Directors.

The Chairman of the Nomination Committee convenes the Committee as required. He also reports the Committee's proposals to the Board of Directors and regularly reports to the Board on the Committee's meetings.

Nomination Committee in 2017

Chairman Mikael Lilius, members Kaj-Gustaf Bergh, Johan Forssell and Risto Murto. All members are independent of the company and three are independent of significant shareholders. The Nomination Committee met two times in 2017. The average attendance of all Committee members was 100%.

The Remuneration Committee

The Board appoints a Remuneration Committee to assist it in its work. The Board appoints at least three of its members to sit on the Committee. The majority of the members of the Committee shall be independent of the company.

The Board defines the duties of the Remuneration Committee in the charter confirmed for the Committee. The Remuneration Committee prepares, as necessary, matters concerning the appointment of the President & CEO, the CEO's deputy and other Board of Management members for the Board of Directors. The Committee prepares proposals for the Board of Directors concerning the remuneration principles, incentive schemes and remuneration that apply to the President & CEO and the Board of Management members. External consultants used by the committee are independent of the company and management.

The Chairman of the Remuneration Committee convenes the Committee as required. He also reports the Committee's proposals to the Board of Directors and regularly reports to the Board on the Committee's meetings.

Remuneration Committee in 2017

Chairman Mikael Lilius, members Maarit Aarni-Sirviö and Tom Johnstone. All members are independent of the company and two are independent of significant shareholders. The Remuneration Committee met three times in 2017. The average attendance of all Committee members was 100%.

Board member committee meeting participation in 2017

	Audit Committee	Nomination Committee	Remuneration Committee
Mikael Lilius	-	2/2	3/3
Tom Johnstone	-	-	3/3
Maarit Aarni-Sirviö	5/5	-	3/3
Kaj-Gustaf Bergh	-	2/2	-
Karin Falk	-	-	-
Johan Forssell	-	2/2	-
Risto Murto	5/5	2/2	-
Markus Rauramo	5/5	-	-

Board of Management

Jaakko Eskola

President & CEO of Wärtsilä Corporation since 2015. Born 1958, M.Sc. (Eng.). Joined the company in 1998.

Primary working experience

Wärtsilä Corporation, Senior Executive Vice President and Deputy to the CEO, 2013-2015; President, Marine Solutions, 2006-2015; Vice President, Power Plants Sales & Marketing, 2005-2006; Wärtsilä Development & Financial Services Oy, President, 1998-2005; PCA Corporate Finance, Executive Director, 1997-1998; Kansallis-Osake Pankki, various managerial positions in international project finance, 1986-1997; Industrialization Fund of Finland, Corporate Analyst, 1984-1986; VTT Technical Research Centre of Finland, Researcher, 1983-1984.

Positions of trust

The Federation of Finnish Technology Industries and The Finnish Foundation for Share Promotion, Member of the Board.

Relevant prior positions of trust

European Marine Equipment Council (EMEC), President, 2008-2011.

Holdings in Wärtsilä Corporation on 31.12.2017: 8,481 shares



Pierpaolo Barbone

Deputy to the CEO since 2015 and President, Services & Executive Vice President, Wärtsilä Corporation, since 2013. Born 1957, M.Sc. (Eng.). Joined the company in 1996.

Primary working experience

Wärtsilä Corporation, Vice President Services, South Europe & Africa, 2013; Wärtsilä Corporation, Vice President Services, Middle East & Asia, 2010-2013; Wärtsilä Italia S.p.A., Executive Vice President, 2000-2003; Ciserv Group, President, 2001-2006; Wärtsilä Corporation, Vice President Field Service, 1997-2009; Wärtsilä Italia S.p.A., Vice President Services, 1997-2003; Fincantieri C.N.I. S.p.A., Isotta Fraschini diesel engines business unit, Sales manager, 1989-1996.

Holdings in Wärtsilä Corporation on 31.12.2017: 7,277 shares



Päivi Castrén

Executive Vice President, Human Resources since 2012. Born 1958, M.Sc. (Soc. Sc.). Joined the company in 2005.

Primary working experience

Wärtsilä Corporation, Vice President, Human Resources, 2005-2011; Nokia Corporation, Director, Human Resources, Nokia Finland, 2002-2005; Nokia Networks, HR Director, 2000-2002; Nokia Networks, Networks Systems division, HR Director, 1999-2000; Nokia Networks, HR manager, 1995-1998; Valmet Paper Machinery, HR manager, 1988-1995.

Positions of trust

The Federation of Finnish Technology Industries, Chairman of the Committee of Education and Employment; Wilhelm Wahlforss Foundation, Chairman of the Board; Member of the IMD Executive Education Advisory Council.

Holdings in Wärtsilä Corporation on 31.12.2017: 4,933 shares



Javier Cavada Camino

President, Energy Solutions & Executive Vice President, Wärtsilä Corporation, since 2015. Born 1975, PhD (Eng.). Joined the company in 2002.

Primary working experience

Wärtsilä Corporation, Vice President, Services South Europe and Africa, 2013-2015; Vice President, Propulsion Services, 2015; Wärtsilä Propulsion, Director, Quality & Operational Development, 2012-2013; Wärtsilä Propulsion Wuxi Co., Ltd., Managing Director, 2011-2013; Cedervall Zhangjiagang Marine Components Co., Ltd., Managing Director, 2011-2013; Wärtsilä CME Zhenjiang Propeller Co. Ltd., Technical Director, 2009-2011; Professor at University of Cantabria, Spain, 2007-2009; Wärtsilä Propulsion Spain, S.A., Director, Delivery Centre, 2008-2009; Production Manager, 2002-2007; Robert Bosch Spain, S.A., Production Manager, Starter Motor, 1999-2002; Technical Manager, Production lines, 1997-2002.

Holdings in Wärtsilä Corporation on 31.12.2017: no shares



Kari Hietanen

Executive Vice President, Corporate Relations and Legal Affairs since 2012, Company Secretary since 2002. Born 1963, LL.M. Joined the company in 1989.

Primary working experience

Wärtsilä Corporation, Executive Vice President, Human Resources and Legal Affairs, 2002-2011; Wärtsilä Power Divisions, Group General Counsel, 2000-2002; Wärtsilä Diesel Group, General Counsel, 1994-1999; Metra Corporation and Wärtsilä Diesel Group, Legal Counsel, 1989-1994.

Positions of trust

European Engine Power Plants Association, EUGINE, President; German-Finnish Chamber of Commerce, Member of the Board; Finnish-Russian Intergovernmental Economic Commission, II Deputy Chairman; Finnish-Korean Trade Association, Deputy Chairman of the Board; East Office of Finnish Industries Ltd, Member of the Board; Confederation of Finnish Industries (EK), Chairman of the Trade Policy Committee; International Trade Committee, Finland Chamber of Commerce / ICC Advisory Board, ICC Finland, member.

Holdings in Wärtsilä Corporation on 31.12.2017: 5,211 shares



Roger Holm

President, Marine Solutions and Executive Vice President, Wärtsilä Corporation, since 2015. Born 1972, M.Sc. (Econ.). Joined the company in 1997.

Primary working experience

Wärtsilä Corporation: Senior Vice President, Engines, 2013-2015; Vice President Seals & Bearings, 2011-2013; Vice President Solutions Management, Services, 2010-2011; Vice President Business Development, Services, 2008-2010; Chief Information Officer, 2006-2008; Program Director, Global ERP Program, 2002-2006; Corporate Controller, 2001-2002; Wärtsilä Finland Oy & Wärtsilä NSD Finland Oy: various managerial positions, 1997-2001.

Holdings in Wärtsilä Corporation on 31.12.2017: no shares



Atte Palomäki

Executive Vice President, Communications & Branding, since 2008. Born 1965, M.Sc. (Pol.). Joined the company in 2008.

Primary working experience

Nordea Bank AB (publ.), Group Chief Press Officer, 2007-2008 and Chief Communication Officer, Finland, 2005-2006; Kauppalehti, Senior Business Correspondent, 2002-2005; MTV3, Senior Economic Correspondent, 2000-2002, News Producer, 1995-2000 and News Anchor, 1993-1995.

Positions of trust

Taloudellinen Tiedotustoimisto TAT (Economic Information Office), European Association of Communication Directors (EACD) and Management Group of the Finland Promotion Board, Member of the Board.

Holdings in Wartsilä Corporation on 31.12.2017: 4,831 shares

**Marco Ryan**

Executive Vice President and Chief Digital Officer since 2016. Born 1966, BSc (IM). Joined the company in 2016.

Primary working experience

Flint Group, Interim Chief Digital Officer, 2016; Thomas Cook Group, Chief Digital Officer, 2013-2015; Thomas Cook Touristik GmbH, Managing Director Omnichannel, 2013-2014; Accenture Interactive, Managing Director (ASEAN), 2011-2013; Premier Farnell Plc, Senior Vice President eCommerce and Digital, 2006-2011; Capgemini Consulting, Executive Consultant, 2001-2006; Interactive Collector Plc, VP Interactive Services, 1999-2001; Telematix and Keyhaven Ltd, Managing Director, 1997-1999; British Army, Officer with various management and operational roles, 1985-1997.

Holdings in Wartsilä Corporation on 31.12.2017: no shares

**Marco Wirén**

Executive Vice President and Chief Financial Officer since 2013. Born 1966, M.Sc. (Econ.). Joined the company in 2013.

Primary working experience

SSAB, Executive Vice President and CFO, 2008-2013; SSAB, Vice President Business control, 2007-2008; Eitel Networks, CFO and VP Business Development, 2002-2007; NCC, VP Business Development and Group Controller, 1995-2001.

Positions of trust

Neste Corporation, Member of the Board.

Holdings in Wartsilä Corporation on 31.12.2017: 4,905 shares



The President & CEO and the Deputy CEO

The Board of Directors appoints a President for the Group who is also its Chief Executive Officer. The President & CEO is in charge of the day-to-day management of the company and its administration, in accordance with the company's Articles of Association, the Finnish Companies Act, and the instructions of the Board of Directors. He is assisted in this work by the Board of Management. The President & CEO's service terms and conditions are specified in writing in his service contract. The President & CEO of the company is Mr Jaakko Eskola. The deputy to the President & CEO is Mr Pierpaolo Barbone, President, Services.

Operations of the Board of Management

The company's Board of Management comprises nine members: the President & CEO, the Chief Financial Officer, the Executive Vice Presidents heading the Energy Solutions, Marine Solutions and Services businesses, the Chief Digital Officer and the Executive Vice Presidents heading the Communications & Branding, the Corporate Relations & Legal Affairs, and the Human Resources functions. Board of Management members are appointed by the company's Board of Directors, which also approves their remuneration and other terms of their employment.

The Board of Management is chaired by the President & CEO. It considers strategic issues related to the Group and its businesses, as well as investments, product policy, the Group's structure and corporate steering systems, and it supervises the company's operations.

The Chief Financial Officer's main areas of responsibility include group control, treasury (including project and customer financing), taxation and process development, and corporate planning. The Executive Vice Presidents heading the businesses are each responsible for the sales volumes and profitability of their respective global businesses, employing the services of the Group's worldwide subsidiaries. The Chief Digital Officer leads the Information Management organisation and is responsible for developing and executing Wärtsilä's digital strategy, and related digital governance in close collaboration with the CEO and the Board of Management. The main areas of responsibility of the Executive Vice President, Corporate Relations & Legal are corporate relations and legal affairs, intellectual asset management and sustainability, as well as environmental and occupational health and safety. The Executive Vice President, Human Resources is responsible for people related processes. The main areas of responsibility of the Executive Vice President, Communications & Branding are external and internal communications, as well as branding. Information on the members of the Board of Management and their areas of responsibility and holdings can be found in the Board of Management CVs.

The Board of Management in 2017

In 2017, the Board of Management met 14 times. The main issues addressed by the Board of Management included market development and business strategy, new growth areas, and the profitability of the company, as well as issues relating to developments regarding competitiveness, costs and Wärtsilä's organisational structure. Digitalisation and security, in particular cybersecurity, were also high on the agenda, as was occupational health and safety and operational excellence. Carrying out the acquisition of Greensmith Energy Management Systems Inc., and planning and implementing the integration process was another important area of focus. Furthermore, the Board of Management continuously addresses the development of the regulatory operating environment, order intake and production capacity, as well as supplier and other stakeholder relationships.

Corporate management

The company's Corporate Management includes, in addition to the Board of Management, the following directors responsible for corporate functions:

Juha Hiekkanen

Vice President, Financial Controlling
Born 1978, M.Sc. (Econ.)

Riitta Hovi

Deputy General Counsel, Corporate Legal Affairs
Born 1960, LL.M., MBA

Anu Hämäläinen

Vice President, Group Treasury and Financial Services & Support
Born 1965, M.Sc. (Econ.)

Tom Unnérus

Vice President, Corporate Internal Audit
Born 1972, M.Sc. (Eng.)

Sari Kolu

Director, Compliance
Born 1967, Master of Laws, Executive MBA

Jukka Kumpulainen

Vice President, Chief Information Officer (CIO)
Born 1968, M.Sc. (Eng.)

Antti Kuokkanen

Vice President, M&A, Business Control & Analysis
Born 1977, M.Sc. (Econ.), M.Sc. (Eng.)

Vesa Riihimäki

Vice President, Quality
Born 1966, M.Sc. (Eng.)

Marko Vainikka

Director, Corporate Relations and Sustainability
Born 1970, M.Sc. (Eng.)

Natalia Valtasaari

Director, Investor & Media Relations
Born 1984, M.Sc. (Econ.)

Business Management teams

Each business head is supported by a Business Management team.

Energy Solutions

Javier Cavada Camino

President, Energy Solutions
Born 1975, PhD (Eng.)

Alexandre Eykerman

Vice President, LNG Solutions
Born 1972, M.Sc. (Mech. Eng. & Shipping), MBA (Supply Management)

John Jung

CEO & President, Greensmith Energy, Vice President, Energy Storage and Integration
Born 1967, B.Sc. (Econ.), MBA (Strategy & Finance)

Senja Koivusalo

Vice President, Human Resources
Born 1979, BBA, MBA

Melle Kruisdijk

Vice President, Europe and Acting Vice President, Africa
Born 1971, M.Sc. (Mech. Eng.)

Antti Kämi

Vice President, Engine Power Plants
Born 1964, M.Sc. (Civil Eng.)

Sushil Purohit

Vice President, Middle East, Asia & Australia
Born 1972, B.Sc. (Eng.), MBA

Tomas Rönn

Vice President, Americas
Born 1961, B.Sc. (Electrical & Electronics Eng.)

Laura Susi-Gamba

Vice President, Legal Affairs
Born 1963, LL.M.

Ossi Ylinen

Vice President, Finance and Control
Born 1976, M.Sc. (Econ.)

Marine Solutions**Roger Holm**

President, Marine Solutions
Born 1972, M.Sc. (Econ.)

Arjen Berends

Vice President, Finance & Control
Born 1968, MBA

Aaron Bresnahan

Vice President, Sales
Born 1969, MBA & MA (Strategic Studies)

Sinikka Ilveskoski

Vice President, Legal & Contract Management
Born 1967, LL.M.

Timo Koponen

Vice President, Flow & Gas Solutions
Born 1969, M.Sc. (Econ.)

Stephan Kuhn

Vice President, Electrical & Automation, until December 2017
Born 1962, MBA

Juha Kytölä

Vice President, Environmental Solutions
Born 1964, Ph.D (Dr. Eng)

Arto Lehtinen

Vice President, Propulsion
Born 1971, M.Sc. (Eng.)

Annika Parkkonen

Vice President, Human Resources
Born 1971, M.Sc. (Politics)

Stefan Wiik

Vice President, Engines
Born 1971, B.Sc. (Eng.)

Services**Pierpaolo Barbone**

President, Services & Deputy to the CEO
Born 1957, M.Sc. (Min. Eng.)

Guido Barbazza

Vice President, Emerging Business
Born 1960, M.Sc. (Mech. Eng.)

Serge Begue

Vice President, Area South Europe & Africa
Born 1954, Mech. Eng.

Peter Bjurs

Vice President, Finance & Control
Born 1965, M.Sc. (Econ.)

Henri van Boxtel

Vice President, Area Middle East & Asia
Born 1959, B.Sc. (Econ.), Nautical degree

Henrik Dahl

Vice President, Services 4.0
Born 1978, B.Sc. (Tech.)

Tamara de Gruyter

Vice President, Propulsion System Services
Born 1972, B.Sc., Shipbuilding Engineering

Kai Kamila

Vice President, Human Resources
Born 1960, M.Ed. (Master of Education)

Ralf Lindbäck

Vice President, Legal Affairs
Born 1958, LL.M.

Stefan Nysjö

Vice President, Area North Europe

Born 1970, B.Sc. (Mech.)

Walter Reggente

Vice President, Area Americas

Born 1965, Chief Marine Engineer

Vesa Riihimäki

Vice President, Quality

Born 1966, M.Sc. (Eng.)

Managing Directors of the subsidiaries

The Managing Directors of the Group's subsidiaries are responsible for ensuring that the local resources are correctly dimensioned to meet the needs of the businesses and that the subsidiary's personnel development needs are met. The Managing Directors are also responsible for ensuring that the subsidiary's operations fulfil the requirements stipulated in the Group processes, including the quality system, that these operations comply with the respective country's legal requirements and with good business practices, and that communication within the subsidiary is conducted according to the targets of the Group.

Internal control

Wärtsilä has defined its objectives for internal control according to the international COSO framework. Wärtsilä defines internal control as a process implemented by Wärtsilä's Board of Directors, the Management, the Boards of Directors of Group companies, and other personnel, which is designed to provide reasonable assurance regarding the achievement of objectives.

Internal control covers all the policies, processes, procedures and organisational structures within Wärtsilä that help management, and ultimately the Board, to ensure that Wärtsilä is achieving its objectives, that the business conduct is ethical and in compliance with all applicable laws and regulations, that the company's assets, including its brand, are safeguarded, and that its financial reporting is correct. Internal control is not a separate process or set of activities, but is embedded within Wärtsilä's operations.

The system of internal control operates at all levels of Wärtsilä. Wärtsilä maintains and develops its internal control system with the ultimate aim of improving its business performance and, at the same time, of complying with laws and regulations in countries where it operates.

Performance management

Planning and target setting, an integral part of performance management in Wärtsilä, is a regular management activity and not part of Wärtsilä's internal control system. The establishment of objectives, however, is an important pre-requisite for internal control. Through the performance management process, financial and non-financial targets are set for Wärtsilä annually at the Group level. These Group level targets are then translated into targets for the Businesses, Group companies, and eventually for individuals.

The achievement of the annual targets is monitored through monthly management reporting. The performance of the Businesses and the achievement of the annual targets are reviewed on a monthly basis in the respective Management team meetings. The performance relating to the targets set by the Group and the different Businesses are reviewed on a monthly basis by the Board of Management. The respective management teams and the Board of Management also address the reliability of Wärtsilä's financial reporting.

Wärtsilä's financial reporting is carried out in a harmonised way in all major Group companies, using a single instance ERP system and a common chart of accounts. The International Financial Reporting Standards (IFRS) are applied throughout the entire Group. Wärtsilä's finance and control process is essential for the functioning of internal control. Adequate controls in the financial management and accounting processes are needed to ensure the reliability of financial reporting.

The Board of Directors regularly assesses the adequacy and effectiveness of Wärtsilä's internal controls and risk management. It is also responsible for ensuring that the internal control of accounting and financial administration is arranged appropriately. The Audit Committee of Wärtsilä's Board of Directors is responsible for overseeing the financial reporting process. The Group Business Control function is responsible for notifying relevant levels of management regarding deviations from plans, analysing the underlying reasons, and suggesting corrective actions. Group Business Control supports the Businesses in decision-making and analyses to ensure the attainment of financial targets. It maintains and develops the company's performance management processes, so that the management at different levels of the organisation is able to receive timely, reliable, and adequate information regarding the achievement of the organisation's objectives. In addition, it is responsible for developing the financial reporting processes and respective controls.

Legal and compliance management

Legal and compliance management practices and processes occupy a central role in Wärtsilä's system of internal control. Wärtsilä's policy is to act in accordance with the applicable laws and regulations in all countries where it operates.

Legal and compliance management acts predominantly in a proactive manner. Legal Affairs supports the President & CEO and the businesses in analysing and making decisions on matters involving contract policy, risk management, and regulatory considerations. Other key activities are to lead compliance management, and to strengthen and ensure the culture of appropriate conduct and behaviour, both internally and in external business transactions. Compliance management is based on the Code of Conduct and relevant group level policies and directives. Company-wide control mechanisms and processes are a part of the overall internal control system.

HR management

Human resource management practices and processes play an active role in Wärtsilä's system of internal control. Wärtsilä's main human resource management processes with respect to internal control are; compensation and benefits, HR development, recruitment and resourcing management, individual performance management, as well as processes for collecting employee feedback. The HR function is responsible for maintaining and developing Wärtsilä's people related processes to enable effective internal control, also at the individual level.

Other management systems

The Board of Management is responsible for developing and implementing Wärtsilä's management system, continuously improving its performance, and ensuring that it operates effectively. The Wärtsilä management system covers all global processes and management procedures within Wärtsilä related to fulfilling customer requirements. The proper functioning of the management systems highlighted below ensures, for their part, the attainment of Wärtsilä's internal control objectives.

Quality

The quality of Wärtsilä's solutions, and thus quality management, is a top priority for Wärtsilä. Compliance with Wärtsilä's Quality Management System ISO 9001:2000 is compulsory throughout the Group, and compliance with the system is rigorously monitored.

Sustainability

Wärtsilä is strongly committed to sustainability. Wärtsilä's purpose and values, together with a solid financial performance, form the basis for sustainable development within Wärtsilä. Wärtsilä applies global guiding principles, such as the Quality, Environmental, Health & Safety policy (QEHS policy) and the Code of Conduct, which, together with the company's values, ensure a harmonised way of working towards sustainable development. In addition to the aforementioned, the Corporate Manual includes other policies and directives, a description of the company's operating procedures, responsibilities, and the management system structure.

Wärtsilä's Board of Management has overall responsibility for sustainability performance. The Board of Management approves the guiding principles and reviews the content on a regular basis. The Board of Management defines sustainability targets and monitors performance against these set targets. Performance is reviewed in connection with the management reviews at both Wärtsilä's Board of Management and Business Management Team levels.

The Board of Directors reviews major sustainability issues on an annual basis. In addition, the Board of Management identifies major critical concerns and, when necessary, communicates such concerns to the Board of Directors.

Wärtsilä's sustainability function is responsible for providing the necessary information to management, identifying development needs, as well as for coordinating sustainability programmes and preparing instructions. The function cooperates closely with the Businesses and the supporting functions, such as Human Resources, Legal Affairs, Compliance and Quality. It also collects and consolidates sustainability data from the subsidiaries.

Wärtsilä has clearly defined responsibilities, which are supported by necessary instructions and training. This training covers, for example, the Code of Conduct, anti-corruption, as well as environmental and occupational health and safety issues. Wärtsilä monitors its sustainability performance by utilising the information provided by various sustainability tools and activities, such as internal audits and compliance processes.

Risk management

Internal control within Wärtsilä is designed to support the company in achieving its targets. The risks related to the achievement of targets need to be identified and evaluated in order for them to be managed. Thus, the identification and assessment of risks is a pre-requisite for internal control within Wärtsilä. Wärtsilä's internal control mechanisms and procedures provide management assurance that risk management actions are carried out as planned.

Wärtsilä has defined and implemented entity level and process level control activities, as well as information system controls. Control activities at different levels are needed to directly mitigate risks at the respective levels. Wärtsilä's risk management processes consist of Group-wide risk assessment and management processes, as well as project-specific risk assessments and project risk management. The Group-wide risk assessment process results in the creation of action plans for the identified and prioritised risks.

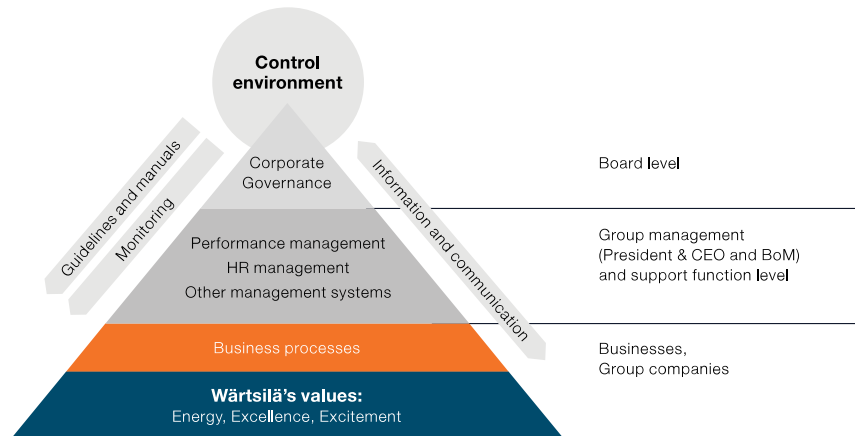
Each Business reports its main risks to Wärtsilä's Board of Management, which reviews the execution of the defined risk management action plans on a regular basis. Wärtsilä's Board of Directors is responsible for defining the Group's overall level of risk tolerance, and for ensuring that Wärtsilä has adequate tools and resources for managing risks. The Board reviews the risk profile regularly. The President & CEO, with the assistance of the Board of Management, is responsible for organising and ensuring risk management in all of Wärtsilä's operations. Business management is responsible for defining action plans for managing the most important risks.

Wärtsilä's most important strategic, operative and financial risks can be found in the [Risks and risk management](#) section of this report.

Information management

Information management plays a key role in Wärtsilä's internal control system. Information systems are critical for effective internal control as many of the control activities are programmed controls.

Main components of Wärtsilä's internal control



Values and the control environment

The foundation of Wärtsilä's internal control system is its values: Energy, Excellence and Excitement. Wärtsilä's values are reflected in its day-to-day relations with its suppliers, customers and investors, and in internal guidelines, policies, manuals, processes and practices. The control environment sets the tone for internal control within Wärtsilä and influences the control awareness of its people. It provides discipline and structure for all the other components of internal control. The elements of Wärtsilä's control environment are included in the corporate culture, the integrity, ethical values and competence of Wärtsilä's personnel, as well as in the attention and direction provided to the personnel by the Board of Directors of Wärtsilä. Wärtsilä's values and control environment provide Wärtsilä's Board of Directors and Management with the basis for reasonable assurance regarding the achievement of the objectives for internal control. The President & CEO and the Board of Management define Wärtsilä's values and ethical principles, which are reflected in the Code of Conduct, and set an example for the corporate culture, which in combination create the basis for the control environment. They are, together with Business management, responsible for communicating Wärtsilä's values to the organisation.

Business processes

The controls embedded in Wärtsilä's business processes play a key role in ensuring effective internal control within the company. Controls in the business processes help ensure the achievement of all the objectives of internal control within Wärtsilä, especially those related to the efficiency of operations and the safeguarding of the company's profitability and reputation. Business management is responsible for ensuring that within its area of responsibility, the defined Group level processes and controls are implemented and complied with. Where no Group level processes and controls exist, Business management is responsible for ensuring that efficient Business level processes with adequate controls have been described and implemented.

Guidelines and communication

Guidelines and manuals

The components of Wärtsilä's internal control system, including for example, corporate governance, the management system, the performance management process, as well as the business and other processes, are described in various guidelines and manuals. The essential Group level policies and guidelines are compiled in Wärtsilä's Corporate Manual. Wärtsilä's Group level Accounting Manual contains instructions and guidance on accounting and financial reporting to be applied in all Wärtsilä Group

companies. The manual supports the achievement of the objectives regarding the reliability of Wärtsilä's financial reporting. Wärtsilä's Group level policies, and any changes to them, shall be approved by a member of the Board of Management. In addition to the Group level guidelines and manuals, the Businesses have issued related guidelines and instructions for their own, specific purposes. The Business level guidelines and manuals are aligned with, and do not contradict, the Group level guidelines and manuals.

Information and communication

An effective internal control system needs sufficient, timely and reliable information to enable the management to assess the achievement of the company's objectives. Both financial and non-financial information is needed, relating to both internal and external events and activities. Informal means by which employees can provide feedback to management, and to communicate suspected misconduct (e.g. directly to the Compliance, Legal Affairs or Internal Audit function) are used. All external communications are carried out in accordance with the Group Communications Policy.

Monitoring

Monitoring is a process that assesses the quality of Wärtsilä's system of internal control and its performance over time. Monitoring within Wärtsilä is performed both on an ongoing basis, and through separate evaluations that include internal, external and quality audits.

Business management is responsible for ensuring that all relevant laws and regulations are complied with in their respective responsibility areas. Wärtsilä's management in turn performs monitoring as part of its regular supervisory activities. The Audit Committee of the Board of Directors assesses and assures the adequacy and effectiveness of Wärtsilä's internal controls and risk management.

The Internal Audit function assists the Audit Committee in assessing and assuring the adequacy and effectiveness of Wärtsilä's internal controls and risk management by performing regular audits of Group legal entities and support functions according to its annual plan. Wärtsilä's external auditor and other assurance providers, such as quality auditors, conduct evaluations of Wärtsilä's internal controls. The Group Finance & Control function oversees the financial reporting processes and controls to ensure that they are being followed. It also monitors the correctness of all external and internal financial reporting. The Legal and Compliance function monitors adherence to the compliance policies of the group. The external auditors verify the correctness of the external annual financial reports.

Audit

Internal

The Group's internal audit is handled by its Internal Audit unit, which reports to the President & CEO. The purpose of the Internal Audit is to analyse the company's operations and processes, as well as the effectiveness and quality of its supervision mechanisms. The internal auditor also participates, if necessary, in audits undertaken in conjunction with acquisitions and carries out special tasks when needed. The Internal Audit function covers all of the company's organisational levels and subsidiaries. An internal audit is undertaken in the main subsidiaries on an annual basis, and in network companies at three-year intervals.

The Internal Audit function prepares an annual plan under which they independently audit different parts of the company, but it is also empowered to carry out special audits. The annual plan is approved by the Audit Committee, to which the Internal Audit function also reports at regular intervals. If required, the auditors also have the possibility to take direct contact with the Audit Committee or members of the Board of Directors.

External

The company has one auditor, which shall be an audit firm. The auditor is elected by the Annual General Meeting to audit the accounts for the ongoing financial year, and its duties cease at the close of the subsequent Annual General Meeting. The auditor is

responsible for auditing the consolidated and parent company financial statements and accounting records, and the administration of the parent company.

Following the closing of the annual accounts, the external auditor submits the statutory auditor's report to the company's shareholders and reports regularly also its findings to the Board of Directors' Audit Committee. An auditor, in addition to fulfilling general competency requirements, must also comply with certain legal independence requirements guaranteeing the execution of an independent and reliable audit.

Auditor in 2017

The Annual General Meeting appointed the audit firm PricewaterhouseCoopers Oy (PwC) as Wärtsilä Corporation's auditor for the year 2017. The auditor-in-charge was Mr Tomi Hyryläinen. Auditing fees paid to PwC amounted to EUR 2.9 million in 2017. Consultancy fees unrelated to auditing duties totalled EUR 0.3 million. These latter fees mainly concerned consultation on taxation matters.

Related party transactions

Wärtsilä's related parties comprise the Board of Directors, the President & CEO, the Board of Management, as well as the associated companies and joint ventures. The Group Finance and Control function evaluates and monitors transactions concluded between the company and its related parties to ensure that any conflicts of interest are taken into account appropriately in Wärtsilä's decision-making process.

Insider management

Wärtsilä manages inside information and insiders in accordance with all applicable laws and regulations regarding insiders and insider trading.

The most important statutory provisions are contained in the Market Abuse Regulation (EU) 596/2014 ("MAR"). Wärtsilä also follows the Insider Guidelines of Nasdaq Helsinki Ltd., and Wärtsilä's Insider Policy.

The company draws up insider lists for projects containing inside information. Insiders are given written notification of their status as insiders and instructions on the obligations that apply to insiders.

Members of Wärtsilä's Board of Directors and Board of Management and certain other Wärtsilä personnel are prohibited from trading of the Wärtsilä financial instruments during the 30 days prior to publication of the financial statements bulletin or interim report.

Wärtsilä publishes notifications on transactions conducted by persons discharging managerial responsibilities, and persons closely associated with them in accordance with the provisions of the MAR. Persons discharging managerial responsibilities refer exclusively to the members of the Board of Directors and the Board of Management of Wärtsilä. These notifications are available on Wärtsilä's webpage.

Remuneration report 2017

Dear Shareholders

This report sets out the remuneration for the Board of Directors and Board of Management for 2017. With this report, we endeavour to provide greater clarity and transparency on the remuneration arrangements at Wärtsilä.

Remuneration at Wärtsilä is guided by our rewarding principles. These principles are used to structure the approach to reward throughout the organisation, and are designed to align employee rewards with the interests of the company and its shareholders. The remuneration policy for the President & CEO and other members of the Board of Management has been developed taking these principles into account.



The short-term incentive awards for the Board of Management were based on profitability (EBIT) and cash-flow targets. The target award opportunity was unchanged from 2016 but the maximum award opportunity was increased.

Wärtsilä's long-term incentive scheme is based on share price development. The share price performance in recent years will result in the 2014 scheme paying out at the maximum of EUR 10.60 per bonus right in February 2018.

We believe in a consistent approach to reward at Wärtsilä. The remuneration arrangements for the Board of Management, which also cascade down to other members of the senior management team, have operated broadly unchanged for the last few years. The Committee considers that the current schemes remain appropriate and no significant changes are planned for 2018.

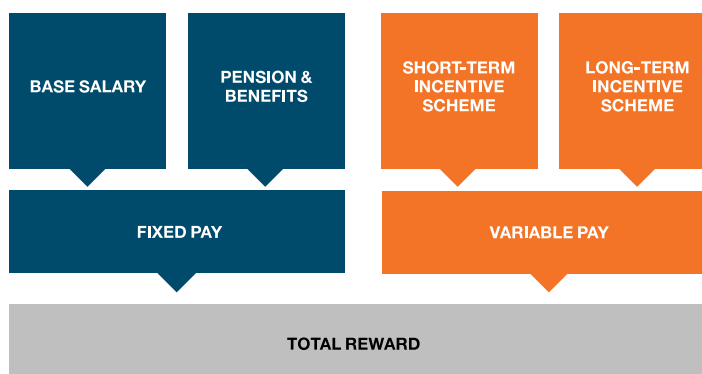
Mikael Lilius

Chairman of the Remuneration Committee

Remuneration principles for the Board of Management

Wärtsilä's remuneration policy is designed to attract, retain and motivate executives by providing compensation solutions that reward them for their performance in delivering business results.

The remuneration arrangements for the Board of Management consist of fixed and variable, performance related, pay as follows:



Fixed pay

The fixed remuneration paid to the President & CEO and to the other members of the Board of Management consists of a monthly base salary and fringe benefits. Base salaries are reviewed annually taking into account company and individual performance and market conditions. Benefits include a company car, private medical insurance and participation in a company pension scheme.

The President & CEO and members of the Board of Management participate in company specific pension schemes in addition to any statutory requirements. The nature of the supplementary pension schemes and retirement ages vary and are generally based on the retirement scheme of the national social security system to which the person in question belongs, and are either defined benefit or defined contribution based. The President & CEO participates in a defined contribution based system with a company contribution comprising 20% of the salary.

Variable pay

The Board of Directors determines the incentive schemes for the Board of Management and the principles underlying them. The Board of Directors also decides on other possible long-term incentive schemes for senior management, unless they are by law determined by the Annual General Meeting. The Board of Management decides on bonus schemes for other directors and managers.

Short-term incentive schemes

The Group operates a bonus scheme, which is implemented globally and is designed to provide incentives for achievement of and reward for delivery of the short-term business plan. The bonus is based on the Group's profitability and agreed personal targets. Around 3,000 directors and managers are covered by this scheme.

For the President & CEO and the Board of Management, performance is based on the achievement of the company's profitability and other financial targets for the financial year, as set by the Board of Directors. The short-term incentive opportunity is capped at 100% of the annual base salary for the President & CEO, and 65% of the annual base salary for the other members of the Board of Management. Bonuses are paid in cash shortly following the year-end.

Wärtsilä's employees also participate in bonus or profit-based incentive schemes. These are applied in the majority of countries where Wärtsilä operates according to that country's legislation, or they take the form of local bonus or profit-sharing schemes. All in all, 80% of the company's employees are covered by the Group's bonus schemes and various other performance-related incentive schemes.

Long-term incentive scheme

Around 100 senior managers, including the President & CEO and the Board of Management, participate in Wärtsilä's long-term incentive scheme.

The objective of the long-term incentive scheme is to align the interests of senior management with those of Wärtsilä's shareholders by creating a long-term equity-related interest for the participants. In so doing this promotes shareholder value creation and drives a long-term performance culture in Wärtsilä.

The long-term incentive scheme has a three year performance period. Under the scheme, participants are awarded "bonus rights". The value of a bonus right at the end of the performance period is based on the growth in value of the share price between the three month period immediately preceding the performance period and the last three months of the performance period. The end share price may include a value for part or all of the normal and extraordinary dividends paid by the Wärtsilä Corporation during the performance period.

Valuation of the bonus rights:

$$\left(\text{COMPARISON SHARE PRICE} - \text{STARTING SHARE PRICE} \right) \times \text{NUMBER OF BONUS RIGHTS} = \text{VALUE OF LONG-TERM INCENTIVE}$$

To ensure an appropriate level of reward, an upper limit is set for each award cycle, capping the maximum value for each bonus right. The bonus rights are paid-out in cash, but the President & CEO and the Board of Management members are expected to acquire Wärtsilä shares with 50% of the net value received until they have achieved their required share ownership level.

Share ownership policy

Each Board of Management member is expected to accumulate and, once achieved, maintain a share ownership in Wärtsilä that at least corresponds to the individual's annual gross base salary.

Contractual terms for the President & CEO

The base salary of the President & CEO is EUR 785,000 p.a. He is entitled to participate in the short- and long-term incentives schemes according to the terms and conditions described above. The President & CEO is eligible to take retirement upon reaching the age of sixty-three (63). His pension scheme is determined according to a defined contribution based system. The retirement pension contribution is equivalent to 20% of the annual salary. Remuneration paid to the President & CEO if dismissed by the company corresponds to 18 months' salary plus a six months' period of notice salary.

Remuneration of the Board of Management

Board of Management's total remuneration in 2017

TEUR

Board of Management	Salary and short-term benefits	Pension contributions	Short-term incentives ¹	Long-term incentives ²	Total
Jaakko Eskola, President & CEO	785	156	295	410	1 645
Pierpaolo Barbone, President, Services and Deputy to the CEO	425	88	105	410	1 028
Other members of the Board of Management	2 162	493	441	1 587	4 863

¹ Relates to the annual bonus for 2016 performance, which was paid in 2017

² Relates to the 2013 long-term incentive cycle, which was paid in 2017

Short-term incentive schemes

Board of Management's performance target structure for the short-term incentives is as follows:

PRESIDENT & CEO	Group EBIT % (2/3)	Group Cash Flow from operating activities (1/3)	
BUSINESS ROLES	Group EBIT % (1/3)	Respective business targets (1/3)	Group Cash Flow from operating activities (1/3)
OTHER CORPORATE ROLES	Group EBIT % (2/3)	Group Cash Flow from operating activities (1/3)	

A sliding scale of targets was set for each measure.

Short-term incentive for 2016 performance

Performance against the group targets was as follows:

MEASURE	PERFORMANCE OUTCOME
Group EBIT	Between threshold and target
Group Cash Flow from operating activities	Between target and maximum

The bonus paid-out, on average, at 50% of the maximum for the Board of Management, and 50% of the maximum for the President & CEO.

Short-term incentive for 2017 performance

The same performance measures and weightings apply to the annual bonus for 2017 performance, which will be paid in 2018. Performance against the group targets was as follows:

MEASURE	PERFORMANCE OUTCOME
Group EBIT	Between threshold and target
Group Cash Flow from operating activities	Below threshold

Bonuses for 2017 will pay-out, on average, at 35% of the maximum for the Board of Management, and 31% of the maximum for the President & CEO. The bonuses will be paid in March 2018.

Short-term incentive for 2018 performance

There are no proposed changes to the operation of the short-term incentive plan for 2018. The performance measures, weightings and maximum limits will be the same as those applying in 2017.

Long-term incentive schemes

The table below sets out details of the realised and outstanding awards under Wärtsilä's long-term incentive scheme. The scheme applies to Wärtsilä's senior management, consisting of approximately 100 directors, including the Board of Management. The value delivered is based on the share price development during the three-year performance period.

Performance period	2014-2016	2015-2017	2016-2018	2017-2019
Number of bonus rights granted	1 846 000	2 076 000	1 962 000	2 139 000
Starting share price, EUR	37.05	44.25	47.47	48.57
Measurement period for comparison share price	Q4 2016 + 50% of dividends paid	Q4 2017 + 100% of dividends paid	Q4 2018 + 100% of dividends paid	Q4 2019 + 100% of dividends paid
Maximum value per bonus right, EUR	10.00	10.60	13.84	18.21
Final comparison share price, EUR	42.17	60.10	-	-
Final value per bonus right, EUR	5.12	10.60	-	-
Payment date	February 2017	February 2018	February 2019	February 2020

The bonus rights are paid-out in cash, but the President & CEO and the Board of Management members are expected to acquire Wärtsilä shares with 50% of the net value received until they have achieved their required share ownership level.

In January 2018, the Board of Directors decided on the long-term incentive plan for 2018-2020. The plan operates according to the same principles as in the previous years.

Board of Management's share ownership in Wärtsilä on 31 December 2017

Board of Management	No. of shares
Jaakko Eskola	8 481
Change in 2017	2 061
Pierpaolo Barbone	7 277
Change in 2017	1 677
Päivi Castrén	4 933
Change in 2017	963
Javier Cavada Camino	0
Change in 2017	0
Kari Hietanen	5 211
Change in 2017	937

Roger Holm	0
Change in 2017	0
Atte Palomäki	4 831
Change in 2017	962
Marco Ryan	0
Change in 2017	0
Marco Wirén	4 905
Change in 2017	1 265

Evaluation

The Board of Directors monitors the Group's short- and long-term incentive schemes and evaluates the achievement of the targets on which they are based. The incentive schemes for 2017 were found to be well balanced and in accordance with market practices. The Board of Directors was satisfied that the rewards paid during the year were appropriate given the company's performance.

Remuneration of the Board of Directors

The Annual General Meeting decides annually on the fees to be paid to the members of the Board of Directors for one term of office at a time.

The Annual General Meeting approved the following fees to the members of the Board of Directors for 2017:

- to the ordinary members EUR 66,000/year
- to the deputy chairman EUR 99,000/year
- to the chairman EUR 132,000/year

Approximately 40% of the annual fee is paid in Wartsilä shares. In addition, each member will be paid EUR 600 per board meeting attended, the chairman's meeting fee being double this amount. Each member of the Nomination Committee and the Remuneration Committee will be paid EUR 700 per committee meeting attended and each member of the Audit Committee will be paid EUR 1,200 per committee meeting attended, the chairman's meeting fee being double these amounts. The members of Wartsilä's Board of Directors were paid altogether EUR 718 thousand for the financial period that ended on 31 December 2017. The Board's members were not covered by the company's incentive schemes.

Fees paid to the Board of Directors

TEUR	Attendance fees		Yearly fees		Total	
	2017	2016	2017	2016	2017	2016
Board of Directors						
Mikael Lilius, Chairman	21	23	132	132	153	155
Tom Johnstone, Deputy Chairman	9	11	99	66	108	77
Maarit Aarni-Sirviö	12	16	66	66	78	82
Kaj-Gustaf Bergh	8	8	66	66	74	74
Karin Falk	5	-	66	-	71	-
Johan Forssell	6	-	66	-	72	-
Risto Murto	13	15	66	66	79	81
Markus Rauramo	15	20	66	66	81	86
Until 2 March 2017						
Sune Carlsson	1	8	-	99	1	107
Gunilla Nordström	1	8	-	66	1	86

Fees paid in Wärtsilä shares in 2017

Board of Directors	No. of shares
Mikael Lilius, Chairman	945
Tom Johnstone, Deputy Chairman	709
Maarit Aarni-Sirviö	472
Kaj-Gustaf Bergh	472
Karin Falk	472
Johan Forssell	472
Risto Murto	472
Markus Rauramo	472

Board of Directors' share ownership in Wärtsilä on 31 December 2017

Board of Directors	No. of shares
Mikael Lilius, Chairman	19 359
Change in 2017	945
Tom Johnstone, Deputy Chairman	2 069
Change in 2017	709
Maarit Aarni-Sirviö	10 282
Change in 2017	472
Kaj-Gustaf Bergh	9 504
Change in 2017	472
Karin Falk	472
Change in 2017	472
Johan Forssell	472
Change in 2017	472
Risto Murto	2 452
Change in 2017	472
Markus Rauramo	5 006
Change in 2017	472

Risks and risk management

The aim and principles of risk management

Wärtsilä, like any other company, is exposed to various risks through the normal course of its activities. No business can be conducted without accepting a certain level of risk, and any expected gains from business activities are to be assessed against the involved risks.

The purpose of risk management is to ensure that Wärtsilä is able to effectively execute its strategies and to reach its targets, in the short term as well as over the long run. The key is to identify the risks that have the potential to restrain the company from reaching its goals, and to determine whether those risks are at an acceptable level.

By definition, risk is the effect of uncertainty on objectives. An effect is a deviation from the expected — positive or negative; in other words either a threat or an opportunity. Actions need to be taken to avoid, mitigate, transfer, or monitor identified risks, or to capture and utilise the opportunities. Wärtsilä's structured risk management process offers a set of reactive, proactive, protective, and preventive tools that are used not only to protect it against threats, but also to turn some of the risks into opportunities.

Risks can only be managed if they are identified and understood in advance, if risk treatment plans for managing them are made, and if a process of continuous follow-up is in place for the related controls. Therefore, risk management is a central part of Wärtsilä's strategic and operational management.

Risk management at Wärtsilä is a continuous process of analysing and managing all the opportunities and threats faced by the company in its efforts to achieve its goals, and to ensure the continuity of the business.

The basis for risk management is the lifecycle quality of Wärtsilä's operations and products, and the continuous, systematic loss prevention efforts at all levels of the Group, not only as an integrated part of management systems, but as part of every employee's daily work. In the long-term, this is the only means for reducing the overall risk related costs.

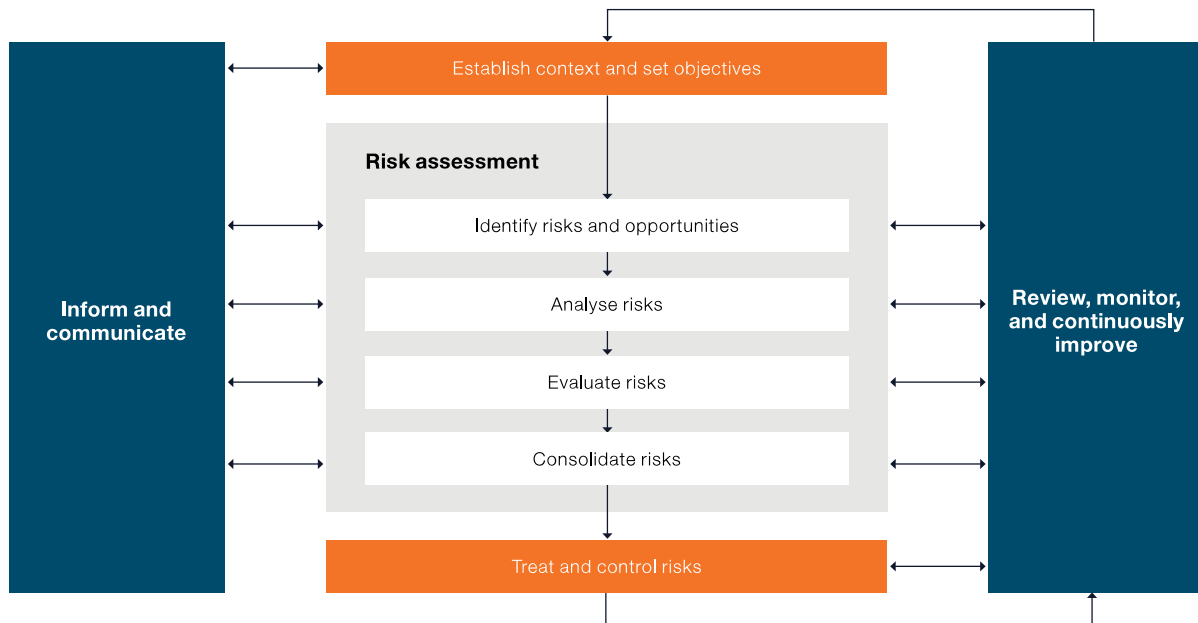
Risk management policy and process

Wärtsilä has a corporate level risk management policy which defines and formalises the Businesses' risk management and reporting procedures. The document acts as a risk management guideline generating a common understanding over risk related concepts. It harmonises and structures the way of working with respect to risk management within the group in order to achieve a process whereby the risks identified are measurable and possible to consolidate. The policy brings consistency to risk management practice, provides a structure for the organisation and Businesses to handle day-to-day risk management tasks in accordance with the agreed processes, and provides a unified vocabulary to provide further guidance with respect to generic terms and definitions relating to risk management.

The Businesses are responsible for the risks and rewards, and thus managing risks is in the responsibility of business management teams and individual managers. The risk management process controls exposures to risk by using systematic mapping, assessment, treatment, reporting, monitoring and control of risks, including the reporting of residual risks. Wärtsilä's risk management process is based upon the ISO 31000 Risk Management Guidelines and Principles, and the vocabulary of ISO 31000 has been adopted in order to streamline risk related communication within the Group.

The risk management process at Wärtsilä is embedded in Wärtsilä's culture and practices, and tailored to fit the business functions and processes of the organisation. The process can be seen as a continuous loop consisting of the repetitive steps of context establishment, risk assessment, risk treatment, communication and consultation, and finally monitoring and review.

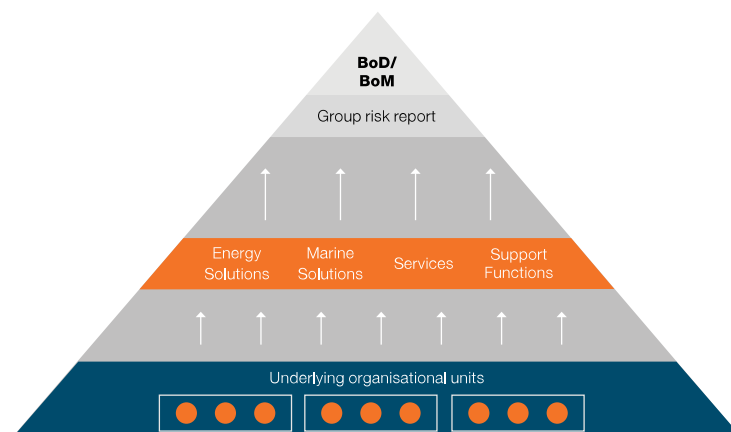
Risk management guidelines and principles



Implementation

The Board of Directors and the Board of Management decide and set the guidelines on strategic matters. Each Business is responsible for achieving its set strategic goals, and for mitigating and managing its risks. The Corporate Risk Management function is part of Group Treasury, which reports to the Chief Financial Officer. The function is responsible for the risk reporting process, and for conducting risk assessments with the Businesses and their underlying organisations. It co-ordinates all risk management activities within the Group, reviews the business risk profile, and cooperates with the Businesses in the implementation of risk mitigation work. It is also responsible for maintaining the Group risk management policy, and for describing the current way of working in relation to risk reporting. Furthermore, the Risk Management function develops and manages global and local insurance schemes for insurable risks. The Audit Committee reviews and assesses the adequacy of risk management, and the Internal Audit function is responsible for reviewing the risk management process on an annual basis.

Risk reporting



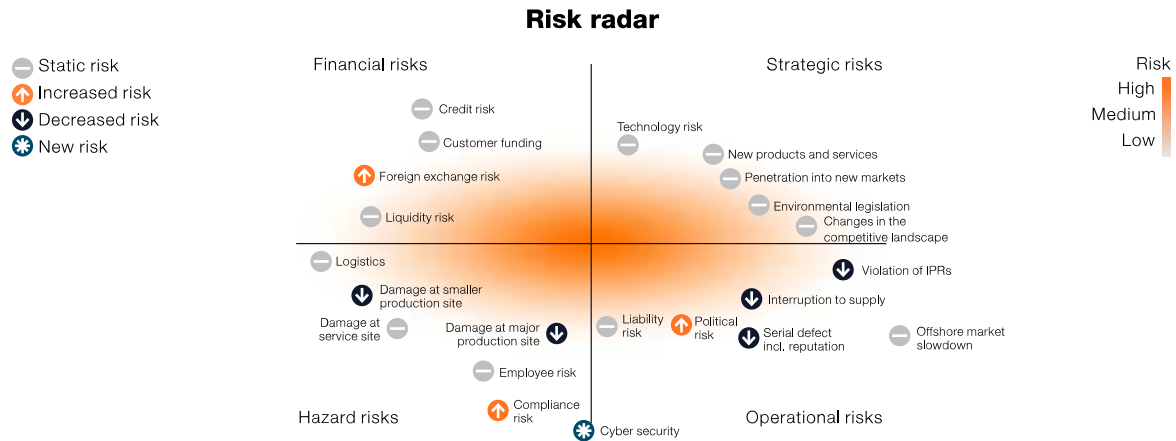
Risk mitigation actions are decided in the normal course of business. At its meetings, the Board of Management conducts annual Management Reviews for each Business and certain main support functions, addressing also their risks and risk mitigation. The identified risks are labelled as either internal or external; they are quantified in euro, and their probabilities are estimated. The Group risk report is then prepared and presented to the Board of Directors.

Risk management is part of the Businesses' management process and has been integrated into the Business Management teams' agenda. The Businesses are accountable for organising and reporting on risk management from their underlying geographical business areas, business lines, organisations, and product centres. All follow-up actions are also the Businesses' responsibility.

Risk categories

The relevant risks for Wärtsilä have been classified under four categories; strategic, operational, hazard and compliance, and financial risks. The potential loss expectancy is highest with strategic and operational risks and lowest with hazard and financial risks. The risks in most of the categories can have both upside and downside impacts. In this regard, hazard risks are an exception, since for them only a negative effect is possible.

Risk radars are used to map the main risks within the risk categories in the annual risk assessment workshops between the Businesses and the Corporate Risk Management function. During the recent years a similar risk mapping process has been adopted also with certain main support functions such as HR and the Group Treasury. Business or function specific risk radars are generated for the use and evaluation of the Business Management teams, and are reviewed and updated by them on a regular basis. The Business specific radars are consolidated into a single Group Risk Radar, which is presented to the Board of Directors and the Audit Committee once a year. The purpose is to facilitate the discussion on risk and to give a quick overview of where priorities should lie in terms of risk management.



Strategic risks

Strategic risk assessment is part of the strategic planning process within the Group. At Wärtsilä, a risk is defined as strategic if it has the potential for imposing a long-term impact on the business.

Business environment risks

Business cycles in the global economy, and in customer industries, influence the demand for Wärtsilä's products, as well as its financial condition and operating result. The flexible manufacturing model based on capacity outsourcing, together with a stable business mix with a large share of sales deriving from Services, provides Wärtsilä with a certain level of stability in a cyclical market. Important economic matters that indirectly affect Wärtsilä, its clients, and suppliers include inter alia, the liquidity and solvency of financial institutions, and thus not only their capability but also their willingness to extend credit, the counter cyclical stimulus programmes adopted by governments – especially in the power and infrastructure sectors, the enhanced activities of multilateral institutions, such as the International Finance Corporation, the availability of export credit schemes and guarantees, and other such factors. However, Wärtsilä's relatively large order book gives the company time to adapt to changes in market conditions.

The implementation of more stringent environmental regulations is important for Wärtsilä's future growth potential, since the company's comprehensive portfolio of products and services allows customers to meet such stricter requirements. A delay in legislation implementation may present a risk to Wärtsilä, and possible changes in the legislation timeline and scope are, therefore, actively monitored.

Energy storage is emerging as disruptive technology to change the paradigm of power systems and Wärtsilä is strongly participating in the new market developments through the acquisition of Greensmith. Rapid deployment of new technologies can create new risks related to managing complex hybrid installations in an optimal way. Greensmith Energy Management System (GEMS) is proven to be an efficient and stable software to control and operate complex systems, which gives Wärtsilä a competitive advantage in managing the related risks.

Market and customer risks

Wärtsilä Services' mid- and long-term activities are expected to grow in line with the development of the existing installed base and general global economic developments. Therefore, a slowdown in global growth represent the primary risk for demand development in the Services business. Wärtsilä Services has more than 12,000 individual customers engaging in service and spare part sales annually, and the current active base of installed Wärtsilä engines is approximately 180,000 MW. Thus, dependency on any single customer or customer segment is limited.

In the Energy Solutions business, the same challenges that impacted the market in 2016 continued in 2017, but not as strongly. Fragile economic growth and slow decision-making represent the primary risks for demand development. Geopolitical tensions and significant currency fluctuations can result in investment decisions being postponed in certain countries. Low oil prices have a

similar impact in the oil and gas producing countries. Price pressure resulting from the challenging competitive environment remains a risk. Orders have been received from all geographic regions, thus limiting the risk of dependence on one particular market. Energy Solutions' three customer segments, namely industrial customers, IPPs (Independent Power Producers), and utilities, were also all represented in the order intake.

Wärtsilä is well represented in all the major shipbuilding markets, and is active in all the main vessel segments. This, along with the large product portfolio, mitigates both geographical and single customer risks. Conditions in the marine markets improved somewhat in 2017. However, challenges resulting from the uncertainty in the shipping and shipbuilding business environment continued to affect markets. The consolidation in the market continued in 2017 leading to a decreasing number of major shipbuilding customers. Order book levels remained on the lower side in 2017. Despite positive development in the cruise and ferry segment and slight improvement in the merchant industry, the gas carrier and offshore segments continued to suffer from overcapacity and low freight rates. The importance of fuel efficiency and environmental regulations are clearly visible, driving interest in environmental solutions, gas as a marine fuel, as well as electric/hybrid solutions. Digitalisation became increasingly important for the shipping industry's business and operating models during 2017. The shipbuilding market continued to be dominated by Asian yards, notably China and South Korea, but with good activity also in Europe thanks to activity in the cruise and special vessel segments.

Competitive situation and price risks

In the Services business, Wärtsilä has no direct competitors capable of offering a similar portfolio of services from a single source. Excluding the networks of other engine manufacturers, there are few global players in the service market. The continued focus of customers on optimising operating expenditures can lead to an increase in competition for services where price is more important than quality. The main action for mitigating this risk is to promote the value based offering.

In Energy Solutions' larger gas-fired projects, Wärtsilä faces competition from gas turbine manufacturers, such as GE and Siemens. In smaller gas power plant projects, and in the liquid fuel power plant market, the competitors are mainly other combustion engine suppliers, such as MAN Diesel & Turbo, GE Jenbacher, Caterpillar (MAK), and Rolls-Royce. Price pressure resulting from the prevailing competitive environment remains a risk. In Wärtsilä's addressable market, i.e. the market for installations of up to 500 MW, orders for natural gas and liquid fuel power plants totalled 25.2 GW during the twelve months ending in September. Wärtsilä's market share was 15%. Wärtsilä's success in the market can be attributed to its flexible power generation solution, which can be used in a wide range of different applications and power plant sizes.

For Marine Solutions, the competitive landscape remained largely unchanged in 2017. The most significant competitors in the main engine markets are MAN Diesel & Turbo and Caterpillar (MAK). Wärtsilä has a strong position in medium-speed main engines with a 47% market share in 2017. In auxiliary engines, Wärtsilä's market share was 10%. In propulsion equipment, the competition is more fragmented and varies by product category. One of the main competitors for these products is Rolls-Royce. In environmental solutions, as well as in flow and gas products, the markets are very fragmented. Alfa Laval and Evac are two of the main competitors in environmental solutions, while in the Electrical and Automation segment Wärtsilä faces competition from companies like Kongsberg, GE and Siemens. Price competition has continued to be intense in the marine markets. The strategic move of becoming a systems integrator with automation and ship design capability has proven to be important in the competition for new projects with larger and more value added scopes. The concept of selling packaged solutions reduces price volatility.

Political and legislative risks

Wärtsilä is present in over 200 locations in more than 80 countries and has delivered power plants to 177 countries. Political developments and changes in legislation can have a significant impact on Wärtsilä's business. Wärtsilä actively monitors political and legal developments in its markets, and engages in dialogue with various official bodies on projects of importance to its operations and intellectual property rights. Much of this engagement takes place through interest groups and trade organisations. The company monitors political and legislative changes at both the corporate and subsidiary levels.

In recent years, there has been increased regulatory activity by different governments worldwide, which has led to the need for emphasising due internal processes to ensure compliance. As an example, the continuing and changing trade sanctions were complied with and closely monitored during 2017. This has required increased internal efforts to ensure that adequate procedures are in place.

Climate change and sustainability risks

Wärtsilä has assessed its sustainability risks, including climate change risks, in both its strategic and operative risk assessments. However, the risks were not found to be significant. The potential business risks related to sustainability, climate change, and Wärtsilä's products are in the areas of regulatory emission restrictions and changes in customer attitudes to using combustion engines and fossil fuels. The risks in environmental legislation changes are related to the complexity of the overall field of different emissions, the balance between commercially available fuels and their resulting emissions, available abatement technologies, the impact on overall energy efficiency, and the resulting financial feasibility of the various alternative ways to meet regulatory demands.

Being at the forefront of technological developments mitigates sustainability risks and gives Wärtsilä many opportunities arising from tightening environmental regulations. Over the years, Wärtsilä has worked continuously to improve the efficiency of its products, while at the same time seeking ways to reduce emissions. The fuel flexibility of Wärtsilä's products enables the utilisation of various fuels, including gas and those from renewable sources, while their operational flexibility enables the installation of large capacity based wind and solar energy systems without hampering the reliability of the electricity grid. Wärtsilä recently entered both the solar energy and energy storage businesses; a further step in providing our customers with sustainable innovations that reduce carbon emissions. Wärtsilä's technology also enables energy to be generated with a minimum use of water. The lack of fresh water is expected to be one of the major challenges facing the world in the future. In shipping, Wärtsilä can reduce the carbon footprint of vessels through optimised ship design, and optimal propulsion solutions. Environmental solutions offer alternative technologies to reduce SO_x emissions and to treat waste and ballast water. In Energy Solutions, Wärtsilä's Smart Power Generation concept supports the increase in low carbon power generation, including wind, solar, and natural gas fired plants. Wärtsilä offers several retrofit solutions for the after-sales market to reduce emissions and to increase fuel efficiency.

For more information, please see the [Sustainability](#) section in this annual report.

Technology risks

Wärtsilä aims to increase the competitiveness of its solutions and manage technology risks through solid R&D efforts and innovation. The development of new products is based on the strategic view of optimising lifecycle value for customers with modern and sustainable power solutions through, for example, gas solutions, environmental technologies, ship design, and electrical & automation solutions. As a technology leader, Wärtsilä places strong emphasis on emissions control, enhancing efficiency, and maintaining the cost competitiveness of its products. Connectivity and the utilization of data to further optimize efficiency and unlock new customer values is becoming an increasingly important element of Wärtsilä's development roadmap.

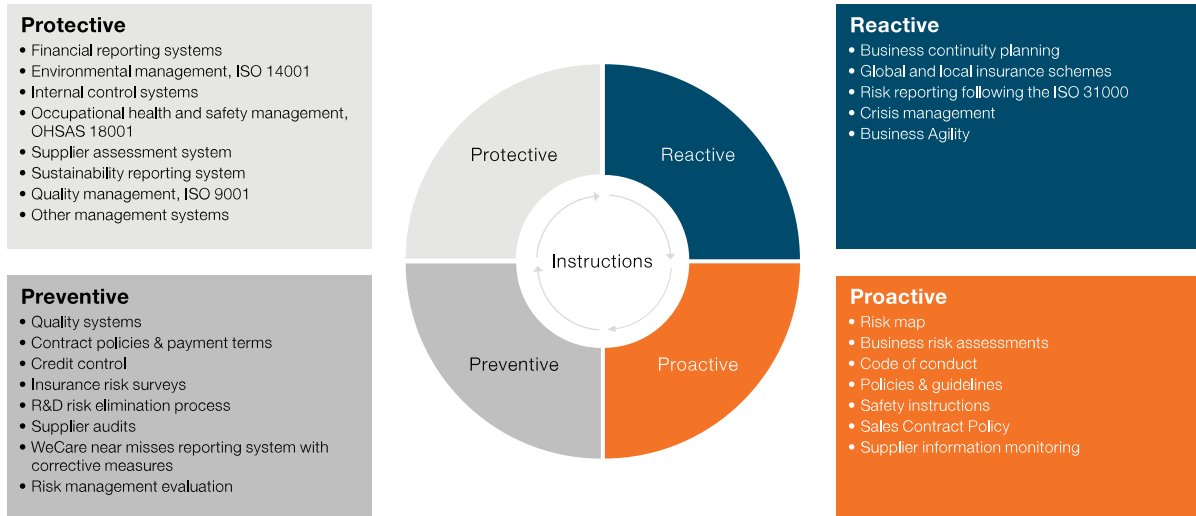
Operations, risks and opportunities



Operational risks

Operational risk management is part of the daily work of the Businesses. Opportunities and risks are identified, assessed, and managed on a daily basis and reported to, and managed by, the appropriate management level. The status of these opportunities and threats are reviewed on a periodic basis and appropriate further actions are taken.

Risk management process



Manufacturing risk

Wärtsilä constantly analyses its manufacturing footprint and capacity costs, including costs related to the supply chain. Risk assessments have been made for all the main delivery centres, and significant safety and risk mitigation investments have been completed. Risk identification, assessment and mitigation actions are executed on a regular basis as part of operational management. Management systems for quality, environmental, occupational health and safety, and other systems are utilised to improve productivity, while safety and business continuity plans have been implemented for the key delivery centres.

Supplier and sub-contractor risk

Wärtsilä’s supply management is integrated within the business lines. The aim is to work in partnership with the supplier base to create value for Wärtsilä’s customers by ensuring quality, on-time delivery and the lowest total cost. In order to ensure coordinated interfaces and synergies for the cross-divisional supplier base, a category management structure has been in place since 2007. Indirect Purchasing remains a centralised function responsible for managing strategic sourcing activities for indirect materials and services in all businesses and support functions.

The supply management units have a unified process for managing and controlling Wärtsilä’s supplier network, and for verifying that the suppliers’ performance meets Wärtsilä’s expectations. Supplier performance is, therefore, continuously measured. A key activity in managing business continuity planning is the regular assessment of business interruption risks, which is carried out in cooperation with the company’s suppliers. Several supplier risk audits have been completed jointly with the insurer as one means of mitigating risk. These audits are now one of the regular tasks for the supply category managers and the Risk Management function.

Wärtsilä has developed its supply related activities by creating close collaboration and long-term relationships with its main suppliers. This cooperation creates a common view towards values and goals, which in turn supports the management of Wärtsilä’s strategic risks. To further mitigate supplier and sub-contractor risks, a comprehensive follow-up of suppliers’ credit worthiness has been established. Supplier related risks for key components are mitigated by establishing dual- or multi-sourcing.

Lifecycle quality of products and product liability risk

The launching of new products always involves risks. In the R&D process, several risk management techniques are applied, including the risk elimination tool FMEA (Failure Modes and Effects Analysis) and in-house validation testing. Wärtsilä seeks to

control quality risks by monitoring the incoming quality of the supply chain, and by designing and manufacturing its products with all due care. Wartsilä applies a GATE model in order to control the product development process. Initially, only a limited release of new products is allowed, and via the gate approach, full release authority is given to the sales organisations only after testing and further validation has been completed.

As part of the on-going digital transformation, a so-called Agile way of working is being adopted in the Digital organisation, which allows Wartsilä to test new ideas and business models quickly in order to promptly adapt to changing market needs. This approach is used for conceptualisation to avoid the risk of losing business opportunities, while products continue to go through the established GATE development. Thereby, the two models complement each other and are used in different context within the organisation.

Wartsilä seeks to control its manufacturing quality risks by applying several assurance and quality control principles. The level of quality assurance and control requirements are determined based on component criticality, and they are applied throughout the delivery chain. The 5S (sort, shine, set, standardise, and sustain) philosophy is implemented at all production sites to increase quality levels, and to support lean operations.

Both Services and the business lines are responsible for supporting customers in all warranty issues. This offers a feedback loop from the field to production and R&D, while taking care of customers' installations throughout their lifecycle. The company makes warranty provisions to cover any costs that may arise after product delivery. The company's product liability insurance covers unexpected damages.

Wartsilä seeks to continuously improve the quality of its products and services through the adoption of best industry practices and good governance. Management at all levels is responsible for the quality of output from their organisations, and is accountable for ensuring that appropriate review and feedback mechanisms are in place. The centralised Wartsilä Quality function is responsible for coordinating quality activities across the businesses, and for ensuring that senior governance mechanisms are in place and effective.

Contractual risks

Wartsilä's non-service sales include projects and equipment supply deliveries of various sizes. The most substantial orders concern turnkey power plants. However, in relation to the total volume of business, the risks from individual projects do not reach significant levels. The lifecycle quality of the products and work, starting from the initial design, throughout all stages of the production process, to the eventual field service work, plus the use of standard sales contracts, including the establishment of a contract review process, together reduce the risk of product liability claims.

In the Services business, the contractual risk is related mainly to long-term agreements and service projects, such as engine upgrades, retrofits or modifications. These offerings represent approximately 25% of the total Services business, but the risks connected to individual contracts do not reach significant levels since the business between the various customers and countries is broadly spread. In addition, both offerings follow a well-defined sales process, thereby bringing multiple control points to observe embedded risks and to plan their control, both in contractual measures as well as in execution.

Risk of non-compliance, corruption and fraud

Wartsilä complies with the law and its own internal policies and procedures everywhere the company does business. Wartsilä's Code of Conduct is the key guideline for all employees globally. Wartsilä is committed to high ethical standards and integrity in its Businesses, and to preventing corruption and violations of the principles set forth in the Code of Conduct, as well as in Wartsilä's Anti-Corruption and Compliance Reporting policies. Compliance processes are embedded in all of the Businesses, and the responsibility for compliance and awareness of ethics and integrity is that of all Wartsilä employees. Wartsilä is fully committed to compliance with the anti-corruption laws and statutes. Wartsilä's Anti-Corruption Policy absolutely forbids any kind of corruption and bribery, and the top management of the company has a zero-tolerance policy regarding corruption and fraud.

The Compliance function promotes Group wide compliance and continuously strives to raise awareness of the risk of corruption and bribery and other misconduct. It is primarily responsible for creating and enforcing Group level policies and procedures, training programmes, internal compliance investigations, managing the consequences of misconduct, and reporting. The continuous development of Wartsilä's compliance programme and nurturing the company's commendable ethical culture are pivotal tasks for the Compliance function. Moreover, Compliance supports and cooperates with the Businesses and other

corporate functions in their risk management efforts. Wärtsilä has a Group-wide programme for strengthening its Code of Conduct which aims to increase employees' understanding on how the Code of Conduct impacts the everyday work at all Wärtsilä locations wherever Wärtsilä operates.

While Wärtsilä is aware of the risk of being subject to fraud by external business parties, and that the risk of corruption and fraud is heightened in many markets where the company operates, Wärtsilä maintains its highly ethical practices at all times. Full compliance with its stringent anti-corruption regime, including policies to prevent the corruption and bribery risk of third parties, is demanded by Wärtsilä.

Cyber & information security related risks

Wärtsilä has an internal organisation dedicated to cyber security governance and management. This organisation, in cooperation with Wärtsilä's divisional business management, is responsible for Wärtsilä's cyber security governance and management in connection with its customer offerings and internal operations. The Wärtsilä cyber security governance model ties together traditional safety and security functions with cyber security operations.

Information security risks related to Wärtsilä's internal operations are continuously identified and evaluated. The mitigation activities are executed in Wärtsilä networks, endpoints and services. The Wärtsilä Security Operations Centre monitors the internal threat exposure level and provides a coordinated response to identified information security incidents.

At Wärtsilä the businesses are responsible for monitoring the regulatory developments in the maritime and energy production sectors, thus securing that the company's offerings are compliant with the applicable regulations now and in the future. In context with cyber related regulation, the businesses are supported by the Cyber Security function.

Commodity price risk

Oil

The direct effect of oil price changes on Wärtsilä's production is limited, with their impact being mainly demand related. Higher oil prices represent a risk for global economic growth and increase operating costs, especially in the shipping markets. However, they also stimulate investments in exploration and production for oil and gas, both on land and offshore. Furthermore, high oil prices increase investments in gas carriers, gas-based power plants and, increasingly, also in gas-fuelled vessels. Low oil prices can delay investment decisions in oil producing countries and regions, as well as in the offshore industry. Wärtsilä is a global company involved in different shipping and power plant segments where oil price changes can have an opposing impact on demand drivers. This position is further diversified by the increasing importance of natural gas in Wärtsilä's business.

Metals

Metal prices have an indirect effect on the component costs of Wärtsilä's products. Furthermore, some key components are sourced with long-term contracts, and thus raw material price volatility is limited.

Electricity

Electricity prices have no substantial impact on Wärtsilä's production costs. In the Energy Solutions business, high electricity prices support investments in new capacity by utility customers. Lower grid electricity prices do not favour investments in their own generating capacity by industrial customers.

Hazard risks

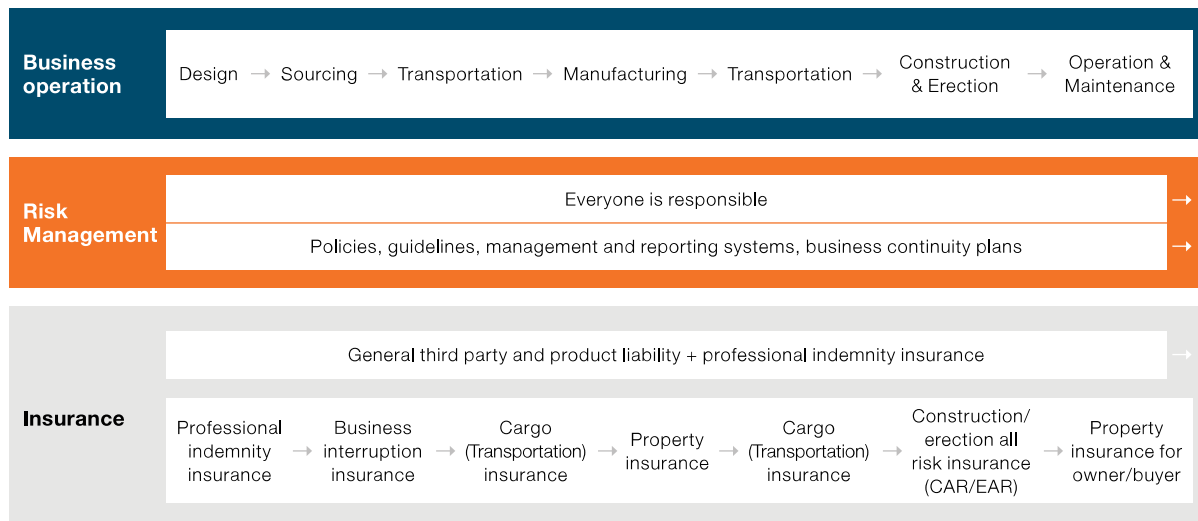
Occupational health and safety systems, travel safety instructions, and crisis management guidelines are aimed at protecting Wärtsilä employees. Appropriate insurances are in place for the personnel, and to emphasise the importance of employee safety, the Board of Management has decided on a corporate level target of zero lost-time injuries. A specific Zero Injury project exists for this purpose, and the target is a part of the company's sustainability programme. During 2017, the near-miss reporting system, WeCare, has been actively used worldwide in order to manage information related to incidents that can threaten the safety, health and security of the company's employees and operations, as well as the environment. This IT solution provides a guide for identifying the causes of incidents, and for taking all appropriate actions in a systematic way.

Environmental management systems are in place to mitigate environmental hazard risks. Wärtsilä maintains a register of all properties used and gives guidelines for the purchase, sale, rental and security of premises, and uses external advisors for environmental audits.

None of Wärtsilä’s major facilities are located in natural disaster areas. Catastrophic peril related scenarios are identified and, where necessary, exposures are mitigated by, for example, elevating sites above the flood risk level or by constructing flood dikes. For Wärtsilä’s main sites, business impact analyses have been conducted and continuity plans created to cover both property and business interruption risks.

The risks that Wärtsilä is unable to influence through its own efforts are transferred whenever possible to insurance companies. Wärtsilä uses appropriate insurance policies to cover indemnity risks related to its personnel, assets, and business interruptions; including supplier triggered interruptions, as well as third-party and product liability. Wärtsilä has established its own captive insurance company, Vulcan Insurance PCC Ltd, as a risk management tool. The company is located on Guernsey for insurance technical reasons, and it insures only Wärtsilä’s own property. Vulcan Insurance PCC Ltd is subject to normal taxation in Finland.

Which insurances cover our business?



Both risk management work and casualty insurance cover Wärtsilä’s products over their entire lifecycle.

Financial risks

Wärtsilä’s financial risks are presented in the notes to the financial statements, [Note 29](#).

Risk profiles and responsibilities

Risks	Risk profile	Policy or other guideline	Responsible body
Strategic risks		Wärtsilä's strategy and business plans	Wärtsilä's Board of Directors (BoD), Board of Management (BoM) and Businesses
Business environment risk		Wärtsilä's strategy and business plans	BoM and Businesses
Market and customer risk		Wärtsilä's strategy and business plans	BoM and Businesses
Competitive situation and price risk		Wärtsilä's strategy and business plans	BoM and Businesses
Political and legislative risk		Various guidelines and risk management policy	Businesses, R&D, Risk management (RM) and Legal functions
Climate change and sustainability risk		QHSE policy, Code of Conduct, management systems (ISO 14001 & OHSAS 18001)	Businesses, R&D and Sustainability function
Technology risk		Patents and industrial rights, product guarantees	Businesses and R&D
Operational risks		Wärtsilä's strategy and business plans	BoM and Businesses
Manufacturing risk		Production systems, Business Continuity Plan	Manufacturing and Businesses
Supplier and subcontractor risk		Supplier requirement and supplier management system, Business Continuity Plan	Businesses and Supply Management
Lifecycle quality of products and product liability risk		Management systems (ISO 9001), safety instruction and manuals, risk management policy, R&D risk elimination instructions	Manufacturing, R&D, Businesses, RM, Quality and Legal functions
Contractual risks		Standard contracts, Corporate Sales Contracting Policy	Legal function and Businesses
Commodity price risk		Production cost control	Businesses and Treasury function

Data security risk	■	Data security principles and Cyber Security Strategy	Businesses and IM function
Non-compliance risk	■ ■	Code of Conduct, Anti-corruption policy, Compliance policy, Whistle-blowing channel	Businesses and Compliance function
Hazard risks		Risk management policy and guidelines	Businesses and RM function
Personnel risk	■	Management system (OHSAS 18001), travel safety instructions, crisis management guidelines, near misses reporting and premises safety plans	Businesses, Human Resources, RM, EHS and security functions
Natural catastrophes	■	Crisis management guidelines, Business Continuity Plan	Businesses and RM function
Fire, cargo and other accidents	■ ■ ■	Management systems (ISO 14001 & OHSAS 18001), premises safety plan	Businesses, RM and Real Estate functions
Financial risks		Wärtsilä's strategy and business plans	Businesses and Treasury function
Foreign exchange risk	■ ■	Treasury policy	Businesses and Treasury function
Interest rate risk	■ ■	Treasury policy	Businesses and Treasury function
Liquidity and refinancing risk	■ ■	Treasury policy	Businesses and Treasury function
Credit risk	■ ■ ■	Credit and Treasury policy	Businesses and Treasury function

Low ■ ■ ■ ■ ■ High